



# Safety Products Brochure

US.[REIDLIFTING.COM](https://www.us.reidlifting.com)









## > Contents

### 04 About REID

- 06 Choosing REID
- 08 Dedicated training
- 09 Quality & safety
- 10 Custom Solutions

### 12 Working at Height

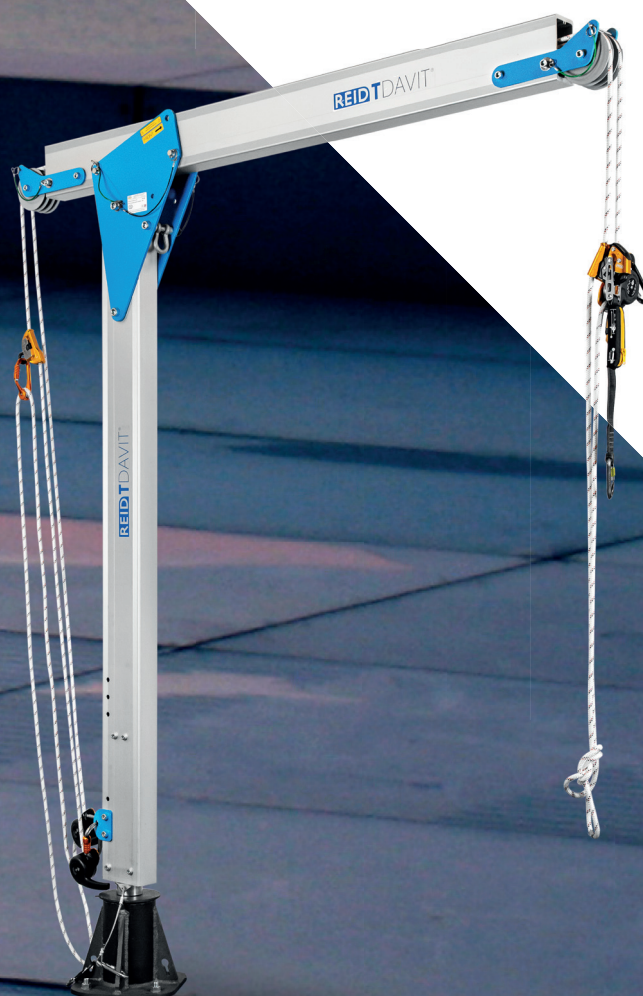
- 14 TDAVIT®
- 18 PORTADAVIT<sup>QUANTUM</sup>®
- 22 PORTABASE®
- 26 PORTAGANTRY®

### 30 Confined Spaces

- 32 PORTX<sup>DAVIT</sup>
- 36 TDAVIT®
- 40 PORTADAVIT<sup>QUANTUM</sup>®
- 44 PORTABASE®
- 48 PORTAGANTRY<sup>RAPIDE</sup>®

### 52 Sockets & Pedestals

### 58 Technical Guidance







# Making light work of **lifting** and **lowering**.

REID Lifting Inc are a leading manufacturer of lightweight, portable lifting products for materials and people, including gantry and davit cranes for lifting loads up to 11000lb.

We have been designing, engineering and manufacturing our products for more than 25 years and during that time have been at the forefront of the development of portable, lightweight solutions that help our customers all over the world in a diverse range of industries achieve their operational objectives simply, safely and cost effectively.

Our mission is to help our customers and end users all around the world achieve their operational objectives simply and safely. We achieve this by continuously investing in our people, on-going product innovation and providing a service and support that's second-to-none.

To serve our US customers we have a wide range of standard products available from stock and can also customize solutions for specific problems and work environments.

Many of our products are patented and have become the industry-standard for lifting solutions, trusted by many leading companies. That's not all, our products are also available to rent from selected companies.

Our US sales and technical teams are ready to help you and we have specialist stocking distributors throughout America and Canada to provide local service and support.







## > Choosing REID

Here at REID, we have built an exceptional reputation for designing high-quality and resilient products for use across a diverse range of industries where our products are trusted.

### **A relationship built on trust**

Our products are designed and tested to meet the most stringent compliance requirements, as well as giving clients and users absolute confidence. Functional testing of our products lies at the heart of what we do.

### **Safety and efficiency in any environment**

To minimize the effects of environmental conditions that may cause corrosion, extend product life and reduce maintenance and inspection costs, our portable equipment is easily stored when not in use.

Many of our products offer dual functionality to enable lifting of people, including fall protection capability and lifting of materials or equipment, providing a fantastic return on investment and increasing operational efficiencies.

We can offer ATEX approval across a wide range of our products, where customers require additional levels of safety in explosive atmospheres.

### **For a 'clean' lifting solution**

Our products can be easily cleaned or sterilized for use in clean rooms, hospitals or laboratories, making them the ideal product solution when working in hospitals, the food industry and the microelectronic industry.

### **One investment for multiple applications**

It is more profitable to have a transportable lifting solution that can be easily moved rather than investing in several pieces of fixed equipment.

In this way, maintenance, labor, installation, testing and insurance costs can be reduced considerably. Portability and ease of assembly is at the heart of what we do.

### **Environmentally conscious**

The manufacture of lifting equipment from easily recyclable materials with high added value ensures a considerable reduction in environmental impact and carbon emissions.

### **At the service of our customers**

We pay special attention to our customers before, during and after the sale.

We are committed to providing individual and personalized solutions whilst ensuring a responsive and quality after-sales service.

In order to meet specific lifting situations, we can consider customization of our products across our entire range.

In addition, we are able to diagnose, study and design new tailor-made solutions and have done so on many occasions.

\*Did you know that aluminum has a propensity to develop cracks in weld areas when fatigued. We minimize the use of welding in our gantry and davit systems ensuring the highest levels of safety.





Choosing REID ensures **confidence**  
when lives are on the line.





## ➤ Dedicated Training

We're more than just product providers. It's important to us that our products are used as effectively and safely as possible, which is why we offer training for our full range of systems.

Our training is tailored to your needs and designed to make sure everybody knows how to safely assemble and use our systems. If you require further training in the field and application of use, many of our distributor partners can offer a range of training courses for working at height and in confined spaces.

**[info@reidlifting.com](mailto:info@reidlifting.com)**





## ➤ Quality & Safety, Guaranteed

All of our products are rigorously tested for our customers benefit before they leave our factory in order to guarantee superior performance. REID products are built to last.

We operate an Integrated Management System certified by a UKAS accredited third party certification body to:

- ISO 9001:2015 – Quality Management System
- ISO 14001:2015 – Environmental Management System
- ISO 45001 – Health & Safety Management System

All REID products are designed by engineers with many years'

experience in the lifting industry which underpins the Integrated Management System.

All products undergo thorough testing to prove functional and safety compliance. This includes working with Notified Bodies to prove compliance with National and International Standards such as ANSI Z359.18.2017.

REID are also proud to be a member of the Associated Wire Rope Fabricators and Lifting Equipment Engineers Association.

### Product Warranty

REID products are guaranteed for 10 years (see terms and conditions for further details).

## > Custom Solutions

Can't find what you need in our standard product range and need something that is more specific to your uniquely challenging requirements. Then look no further. We offer a range of customized solutions to ensure your operational objectives are met, effectively and safely.

We have a talented team of individuals with many years experience in fall protection, confined space access and lifting applications.

We pride ourselves of finding the right solution to a difficult and unique challenge. Simply get in touch on [info@reidlifting.com](mailto:info@reidlifting.com).







## > Our icons explained

On each product page, these icons will help you understand more about the system, its capabilities, and limitations.



### **ANSI Z359.18 compliant for fall arrest**

A compliant anchor point meeting strict requirements of ANSI Z359.18 for protection against falls from a height.\*



### **ATEX certified**

The capability of equipment to work within an explosive atmosphere. Please contact REID for further details.



### **Capacity**

Each system will have a capacity rating for materials and personnel lifting clearly stated along with its serial number for traceability. The capacity rating should NOT be exceeded under any circumstances.



### **People required for assembly / operation**

An indicator of the people typically required to safely assemble and operate the system in normal situations within manual handling guidelines. Every lift should be supported by the relevant risk assessment and method statement prior to the activity.



### **Transportation weight / method**

The format explains whether the system is 'bagged' or 'flat packed' for easy and safe storage, handling and transportation. May show an indicator of the weight of each system for transportation. Weights may vary.

\*Note: Capacity ratings must not be confused with ratings for fall protection applications. For more detailed information, refer to our Assembly and Operation Guides, available to download on our website.





# Working At Height

A safe and reliable solution you can trust when carrying out a range of essential working at height tasks!

Our product range for work at height provides customers with an extensive range of highly portable, lightweight solutions, combined with the ability to utilize structural anchors where it is necessary or convenient to do so.

Our products strength to weight ratios are industry leading, providing anchorages for multiple users in many cases, high levels of safety and greater lifting capacities for maximum efficiency.





Our products for **working at height** include:



### **TDAVIT**<sup>®</sup>

A portable davit system providing an anchor point for fall arrest or suspended rope access work where a greater height of lift or Reach is required. Also providing dual functionality for lifting equipment and machinery.



### **PORTADAVIT** QUANTUM<sup>®</sup>

A davit system providing the ultimate in lightweight portability for fall arrest, whilst also providing dual functionality for lifting equipment and machinery.



### **PORTABASE**<sup>®</sup>

Portable bases for those occasions where permanently installed sockets are not viable, enabling the use of our **TDAVIT** and **PORTADAVIT** QUANTUM<sup>®</sup>.



### **PORTAGANTRY**<sup>®</sup>

Designed for use as overhead anchor systems for multiple users, providing a variety of height adjustment and beam lengths with the added advantage of removable trolleys and winch capability for access, egress and rescue.



# TDAVIT®

Our TDAVIT® is ideal for use in rope access and height safety tasks where a taller column or greater reach is required. A variety of models and accessories provide simple customization

for specific work environments and building configurations. This product can be used with our range of fixed sockets or **PORTABASE®** systems.



\*TDAVIT Winched and US-TDRAC50003 variant shown  
This product is patented



ATEX  
CERTIFIED



1100LB  
CAPACITY



1-2 PERSON  
ASSEMBLY



BOXED  
& BAGGED



Key features

- OSHA compliant
- ANSI Z359.18-17 anchor point
- Meets requirements of SPRAT's standards and IRATA ICOP
- Tested to BS8610:2017
- Suitable for ATEX environments
- Suitable for goods and personnel lifting and as a fall arrest anchor point
- Personnel lifting up to 550lb
- Goods lifting up to 1100lb
- Two-piece aluminum construction for ease of transport and assembly
- Clean anodized finish and powder coated system for increased corrosion resistance
- Suitable for use with a range of REID sockets and portable bases\*
- Davit rotation possible and ease of rotation thanks to patented integral bearing system
- No fixings required, no tools required

\*Restrictions apply

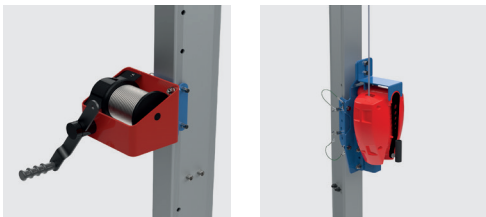
TDAVIT® for Rope Access

- Our specialty rope access davit has been specifically adapted with features that are required for best practice by rope access technicians. Attachment for the Davit to the socket and attachment on the Davit column to assist with a steady decent, plus an additional shackle point in the cheek plates, aiding to keep the top man safe.



Winch Accessories

- Brackets for personnel winches and SRL devices, easily securing them to our lifting products. The following codes are specific to our TDAVIT® Winched or Double Winched.



Personnel Winches	
Supported Device	Product Code
Guardian Checkmate	US-RAWB001200
IKAR PLW	US-RAWB004200
MSA Workman	US-RAWB008000
3M SALA Winch	US-RAWB003000
3M DBI SALA Digital Winch	US-RAWB003000
Tuffbuilt Pro Series 1	US-RAWB009200
Tuffbuilt Pro Series 2	US-RAWB009300

SRL Devices	
Supported Device	Product Code
Guardian FABXR	US-RAWB001000
3M Rebel Protect A	US-RAWB003000
SALA Sealed Block	US-RAWB003000
3M Sala Ultra-Lok	US-RAWB003000
Guardian 3-Way	US-RAWB007000
Honeywell/Miller	US-RAWB007500
MSA Rescuer	US-RAWB008000

## TDAVIT® Winched



### Key features

- OSHA 1910 sub part I (.140) and 1926 sub part M compliant – MAF dependent on Davit reach
- Meets requirements of SPRAT's standards and IRATA ICOP
- ATEX certified [Zone 2 standard, Zone 1 as an option]
- Fall arrest capacity – 1 user
- Personnel capacity up to 550lb
- Goods capacity up to 1100lb
- ANSI Z359.18-17 compliant anchor point on the mast
- Sheave front and rear of beam for winch rope or winch cable
- Double shackle head for fall arrest devices
- Winch bracket options
- Suitable for use with our range of sockets and portable bases

For other socket options or column heights please contact REID

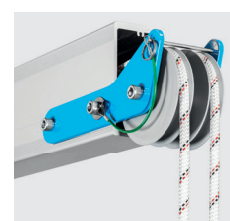
TDAVIT® Winched					
Product Code	Description	Column weight [lb]	Beam weight [lb]	A	B
				Height of Lift	Reach
US-TDWA4A1TD2	T-Davit Type W Column option 4 Beam option 1 [1100lb]	55	26	63½" - 76"	36½" - 39¼"
US-TDWA4A2TD2	T-Davit Type W Column option 4 Beam option 2 [1100lb]	55	29	64" - 79"	43¾" - 47¼"
US-TDWA4A3TD2	T-Davit Type W Column option 4 Beam option 3 [820lb]	55	35	64¾" - 84¾"	58½" - 63"
US-TDWA5A1TD2	T-Davit Type W Column option 5 Beam option 1 [1100lb]	62	26	75¾" - 88¾"	36½" - 39¼"
US-TDWA5A2TD2	T-Davit Type W Column option 5 Beam option 2 [1100lb]	62	29	76¾" - 91¼"	43¾" - 47¼"
US-TDWA5A3TD2	T-Davit Type W Column option 5 Beam option 3 [820lb]	62	35	77" - 96¾"	58½" - 63"

## TDAVIT® For Rope Access 1



### Key features

- OSHA 1910 sub part I (.140) and 1926 sub part M compliant – MAF 6kN [1350lb]
- Meets requirements of SPRAT's standards and IRATA ICOP
- Tested to BS8610:2017
- Fall arrest capacity – 1 user
- Maximum rated mass [RM max] – 310lb
- Two anchor points at rear of column
- One ANSI Z359.18-17 anchor point on mast for transitioning
- Double sheave front and rear of beam for ropes
- Integrated tether for securing davit to socket
- Suitable for use with top mount and side mount sockets



For other socket options or column heights please contact REID

TDAVIT® For Rope Access 1					
Product Code	Description	Column weight [lb]	Beam weight [lb]	A	B
				Height of Lift	Reach
US-TDRAC50001	T-Davit for rope access - 310lb 1 user. Max reach 63"	62	35	77" - 96¾"	58½" - 63"

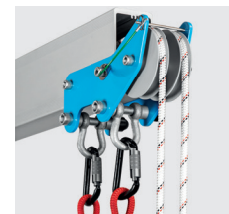


## TDAVIT® For Rope Access 2



### Key features

- OSHA 1910 sub part I (.140) and 1926 sub part M compliant – MAF 8kN [1800lb]
- Meets requirements of SPRAT's standards and IRATA ICOP
- Tested to BS8610:2017
- Fall arrest capacity – 2 users [4kN/900lb per user]
- Maximum rated mass [RM max] – 310lb
- Maximum system mass [SM max] – 620lb [310lb per user]
- Two anchor points at rear of column
- One ANSI Z359.18-17 anchor point on mast for transitioning
- Double sheave front and rear of beam for ropes
- Double shackle head at the front of beam for ropes
- Integrated tether for securing davit to socket
- Suitable for use with top mount and side mount sockets



For other socket options or column heights please contact REID

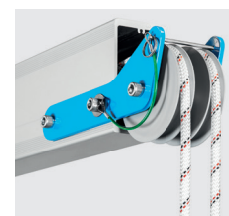
TDAVIT® For Rope Access 2					
Product Code	Description	Column weight [lb]	Beam weight [lb]	A	B
				Height of Lift	Reach
US-TDRAC50002	T-Davit for rope access - 620lb 2 user. Max reach 39¼"	62	26	75¼" - 88¼"	36½" - 39¼"

## TDAVIT® For Rope Access 3



### Key features

- OSHA 1910 sub part I (.140) and 1926 sub part M compliant – MAF 6kN [1350lb]
- Meets requirements of SPRAT's standards and IRATA ICOP
- Tested to BS8610:2017
- Fall arrest capacity – 1 user
- Maximum rated mass [RM max] – 310lb
- Two anchor points at rear of column
- One ANSI Z359.18-17 anchor point on mast for transitioning
- Double sheave front and rear of beam for ropes
- Integrated tether for securing davit to socket
- Suitable for use with top mount and side mount sockets



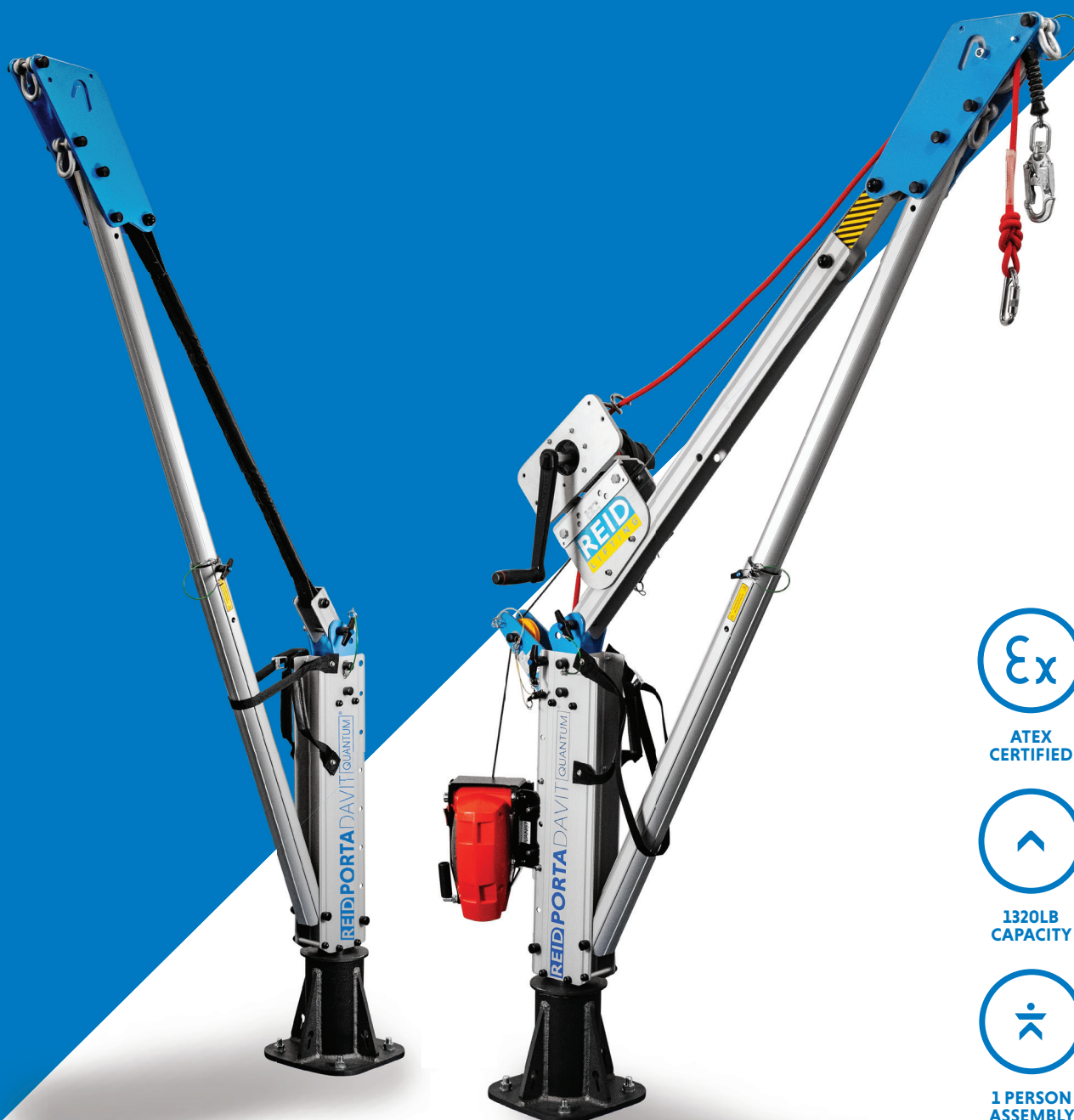
For other socket options or column heights please contact REID

TDAVIT® For Rope Access 3					
Product Code	Description	Column weight [lb]	Beam weight [lb]	A	B
				Height of Lift	Reach
US-TDRAC50003	T-Davit for rope access - 310lb 1 user. Max reach 47¼"	62	29	76¼" - 91¼"	43¾" - 47¼"

# > PORTADAVIT<sup>®</sup> QUANTUM

Our **PORTADAVIT<sup>®</sup> QUANTUM** is ideal for use in tasks where lightweight portability is the key priority. A variety of models and accessories provide simple customization for specific work environments and

building configurations. This product can be used with our range of fixed sockets or **PORTABASE<sup>®</sup>** systems.



ATEX  
CERTIFIED



1320LB  
CAPACITY



1 PERSON  
ASSEMBLY



BOXED  
& BAGGED

\*US-PDQ1S & US-PDQ1W variants shown  
This product is patented



Key features

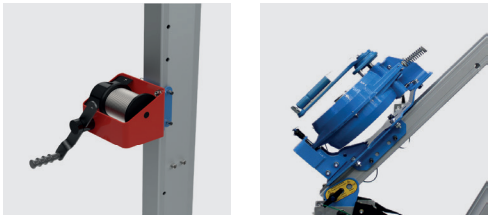
- > OSHA compliant
- > ANSI Z359.18-17 anchor point
- > Suitable for ATEX environments
- > Suitable for goods and personnel lifting and as a fall arrest anchor point
- > Personnel lifting up to 660lb
- > Goods lifting up to 1320lb
- > One piece aluminum construction for ease of transport and assembly
- > Suitable for use with all REID sockets and portable bases\*
- > Davit rotation possible and ease of rotation thanks to patented integral bearing system
- > No fixings required, no tools required

\*Restrictions apply

Accessories

> Winch Brackets

Brackets for personnel winches and SRL devices, easily securing them to our lifting products. The following codes are specific to our **PORTA**DAVIT<sup>QUANTUM</sup>, with a number of configurations available. For more information on these configuration please see the compatibility matrix at reidlifting.com.



Personnel Winch Brackets		
Supported Device	Product Code	
	Column*	Backstay
Guardian Checkmate	US-RAWB001200	US-RAWB001206
IKAR PLW	US-RAWB004200	US-RAWB004206
MSA Workman	US-RAWB008000	US-RAWB008006
3M SALA Winch	US-RAWB003000	US-RAWB003003
3M DBI SALA Digital Winch	US-RAWB003000	US-RAWB003003
Tuffbuilt Pro Series 1	US-RAWB009200	US-RAWB009206
Tuffbuilt Pro Series 2	US-RAWB009300	US-RAWB009306

SRL Device Brackets			
Supported Device	Product Code		
	Column*	Backstay (Single Winch)	Backstay (Double Winch)
Guardian FABXR	US-RAWB001000	US-RAWB001000	US-RAWB001010
3M Rebel Protect A	US-RAWB003000	US-RAWB003006	US-RAWB003010
SALA Sealed Block	US-RAWB003000	US-RAWB003006	US-RAWB003010
3M Sala Ultra-Lok	US-RAWB003000	US-RAWB003006	US-RAWB003010
Guardian 3-Way	US-RAWB007000	US-RAWB007000	US-RAWB007010
Honeywell/Miller	US-RAWB007500	US-RAWB007500	US-RAWB007510
MSA Rescuer	US-RAWB008000	US-RAWB008006	N/A

\*Additional sheave kit required when using any column-mounted winch.

> Rotational Handle

We offer a rotational Davit handle, fit for attachment to the column to make rotation of the davit, especially while under load, much easier and safer.



Product Code	Description
US-RATD000006	Rotation Handle to suit T-Davit and PDQ

## PORTADAVIT QUANTUM®

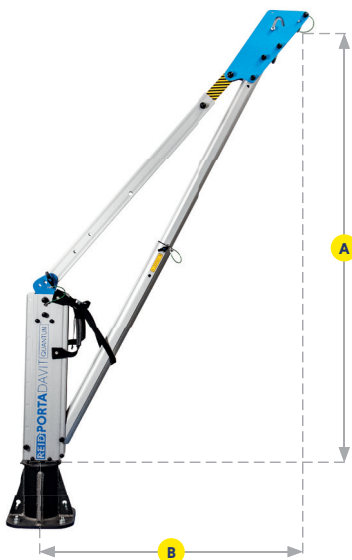


### Key features

- OSHA 1910 sub part I (.140) and 1926 sub part M compliant – MAF 6kN [1350lb]
- ATEX certified [Zone 2 standard, Zone 1 as an option]
- Fall arrest capacity – 1 user
- Personnel capacity up to 660lb
- Goods capacity up to 1320lb
- ANSI Z359.18-17 anchor point on the mast
- Three Reach adjustment points
- Double shackle head for PPE attachment
- Suitable for use with our range of sockets

PORTADAVIT QUANTUM® 1 Shacked				
Product Code	Description	System weight [lb]	A	B
			Height of Lift	Reach
US-PDQ1S	Porta-Davit Quantum Shackle Only. 1320lb capacity, 47" reach	41	83"	47"

## PORTADAVIT QUANTUM®



### Key features

- OSHA 1910 sub part I (.140) and 1926 sub part M compliant – MAF 6kN [1350lb]
- ATEX certified [Zone 2 standard, Zone 1 as an option]
- Fall arrest capacity – 1 user
- Personnel capacity up to 660lb
- Goods capacity up to 1320lb
- ANSI Z359.18-17 anchor point on the mast
- Three Reach adjustment points
- Double shackle head for easy attachment of accessories
- Double sheave head for winches and SRL
- Suitable for use with our range of sockets

PORTADAVIT QUANTUM® 1 Winched				
Product Code	Description	System weight [lb]	A	B
			Height of Lift	Reach
US-PDQ1W	Porta-Davit Quantum Rigid Backstay Winch Ready. 1320lb capacity, 47" max reach	50	83"	47"



PORTADAVIT<sup>®</sup> QUANTUM<sup>®</sup>



Key features

- OSHA 1910 sub part I (.140) and 1926 sub part M compliant – MAF 6kN [1350lb]
- ATEX certified [Zone 2 standard, Zone 1 as an option]
- Fall arrest capacity – 1 user
- Personnel capacity up to 550lb
- Goods capacity up to 1100lb
- ANSI Z359.18-17 anchor point on the mast
- Three Reach adjustment points
- Double shackle head for PPE attachment
- Suitable for use with our range of sockets

PORTADAVIT <sup>®</sup> QUANTUM <sup>®</sup> 2 Shackled				
Product Code	Description	System weight [lb]	A	B
			Height of Lift	Reach
US-PDQ2S	Porta-Davit Quantum Shackle Only. 1100lb capacity, 59" reach	42	77"	59"

PORTADAVIT<sup>®</sup> QUANTUM<sup>®</sup>



Key features

- OSHA 1910 sub part I (.140) and 1926 sub part M compliant – MAF 6kN [1350lb]
- ATEX certified [Zone 2 standard, Zone 1 as an option]
- Fall arrest capacity – 1 user
- Personnel capacity up to 660lb
- Goods capacity up to 1320lb
- ANSI Z359.18-17 anchor point on the mast
- Three Reach adjustment points
- Double shackle head for PPE attachment
- Double sheave head for winches and SRL
- Suitable for use with our range of sockets

PORTADAVIT <sup>®</sup> QUANTUM <sup>®</sup> 2 Winched				
Product Code	Description	System weight [lb]	A	B
			Height of Lift	Reach
US-PDQ2W	Porta-Davit Quantum Rigid Back stay Winch Ready. 1100lb capacity, 59" max reach	51	77"	59"

# PORTABASE®

Our **PORTABASE®** Counterbalance product can be used for suspended rope access and fall protection applications on largely level surfaces, where fixed anchors are not available

or desirable. Height adjustment enables use on surfaces that are not entirely level up to a 5 degree pitch.



ANSI  
Z359.18-17  
COMPLIANT



1320LB  
CAPACITY



1-2 PERSON  
ASSEMBLY



MODULAR  
DESIGN

\*Shown with **TDAVIT** Double Winched [supplied separately]

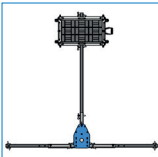


Key features

- ANSI Z359.18-17 compliant for fall protection applications\*
- OSHA compliant
- Suitable for goods and personnel lifting and as a fall arrest anchor point
- Personnel lifting up to 660lb
- Goods lifting up to 1320lb
- Modular aluminum construction for ease of transport and assembly
- Suitable for use with the TDAVIT to provide a highly portable rope access solution\*
- 270° Davit rotation possible
- Adjustable feet to allow for uneven ground levels
- Integrated swivel castors, as standard
- No fixings required, no tools required


\* A range of options available

Product Combinations




PORTABASE®  
Counterbalance

+



US- TDRAC50003

+



Rope Access  
Accessories

=

Solution for  
Rope Access  
Tasks



PORTABASE®  
Counterbalance

+



PORTADAVIT®  
QUANTUM  
Reduced Reach

+



Personnel  
Winch

+



Fall Arrest  
Device

=

Solution for  
Working at  
Height tasks



PORTABASE®  
Counterbalance

+



TDAVIT®  
Double Winched

+



Personnel  
Winch

+



Fall Arrest  
Device

=

Solution for  
Working at  
Height tasks

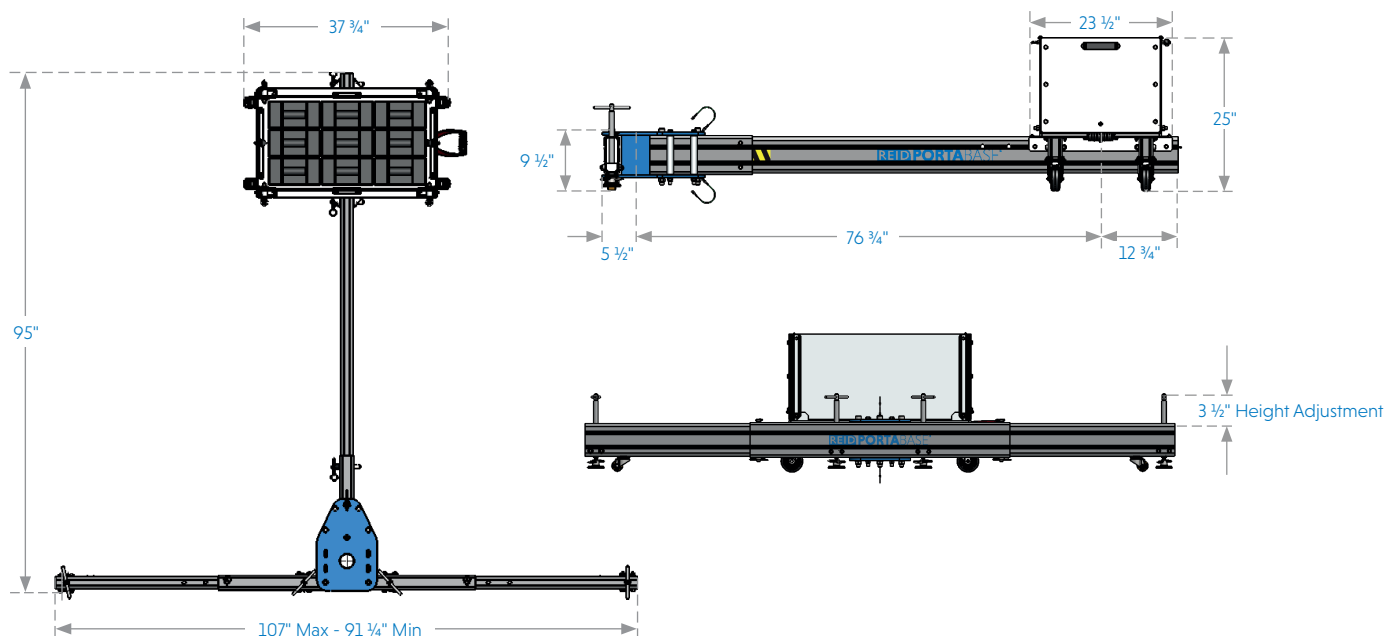
## PORTABASE® Counterbalance



### Key features

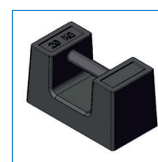
- OSHA 1910 sub part I (.140) and 1926 sub part M compliant when used with a Davit up to a 39" reach – MAF dependent on Davit reach
- ANSI Z359.18-17 compliant when used with a Davit up to a 31½" reach
- Fall arrest capacity – 1 user\*
- Personnel capacity up to 660lb
- Goods capacity up to 1320lb
- Suitable for use with other TDAVIT systems [refer to product brochure for more information]
- 270° Davit rotation possible

\*Fall protection and rope access applications require 800-1100lb of hand weights [see Assembly & Operation Guide for further information].



PORTABASE® Counterbalance			
Product Code	Description	System Weight [lb]	Max Reach
US-PBCB00001	Porta Base Counterbalance Standard	172	39"

PORTABASE® Counterbalance Accessories		
US-RAHW00001	Hand Weight (1 x 44lb)	44
US-RAHW00004	Hand Weight Set (27 x 44lb)	1190



Hand Weight



## Basket Height Adjustment



### Key features

- Fitted to the **PORTA**BASE® Counterbalance basket
- Provides an added height adjustment of 9"
- Rapid attachment to the basket
- Each foot can be adjusted independently providing a method of leveling the system on uneven ground

PORTA		
BASE® Counterbalance Accessories		
Product Code	Description	System Weight [lb]
US-RAPBCB0001	Porta Base Counterbalance Basket Height Adjustment Kit	22.5

## Compatible Systems



TDAVIT®



# PORTAGANTRY®

Our **PORTAGANTRY**® offers an overhead anchor point for multiple users for fall protection, whilst also providing great versatility for lifting goods up to 11000lb. Mobile overhead anchor points can save money on fixed installation costs, whilst providing maximum flexibility and return on investment in many scenarios.

An anchor point above the users head is safer as it reduces free fall distances, reducing the risk of serious injury. Our **PORTAGANTRY**® range is highly customizable to meet your specific needs, with a variety of A-Frame height configurations and beam lengths available.



ANSI  
Z359.18-17  
COMPLIANT



ATEX  
CERTIFIED



11000LB  
CAPACITY



2-4 PERSON  
ASSEMBLY



198-648LB  
FLAT PACK



## Key features

- ANSI Z359.18-17 compliant for fall protection applications
- OSHA compliant
- Suitable for ATEX environments
- Suitable for goods and personnel lifting and as a fall arrest anchor point
- Personnel lifting up to 5500lb & Goods lifting up to 11000lb
- Fall protection capacity from 1 to 5 users
- Three piece aluminum construction for ease of transport and assembly
- 360° swivel locking castors to enable movement in the location of use
- A range of height adjustment up to 19' 1½" and beam lengths up to 27' 6¾" to meet specific customer need, including Wind-up Jack Legs for uneven surfaces

## Accessories

### ➤ Trolley Options



Product Code	Description
US-PGTGS04400	Gated Master Link Trolley rated up to 4400lb to Fit A or B Size Beam
US-PGTGL04400	Gated Master Link Trolley rated up to 4400lb to Fit D Size Beam

### ➤ Gantry Assembly Aid



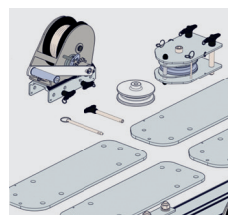
Product Code	Description
US-RAPG000200	Assembly Aid Unit
US-RAPG000201	Snap Hook Strop Kit for Intermediate and Tall Gantry Systems
US-RAPG000202	Snap Hook Strop Kit for TC4 and TC3 Gantry Systems
US-RAPG000203	Snap Hook Strop Kit for TC2 and TC1 Gantry System
US-RAPG000204	Bag for assembly aid kit

### ➤ Wind Up Jack Legs



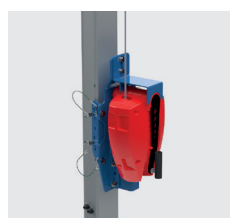
Product Code	Description
US-PGWS00001U	Porta Gantry Universal Wind Up Jack Legs up to 11000lb - Set of 4
US-PGWS00002U	Porta Gantry Universal Wind Up Jack Legs S&M up to 4400lb - Set of 4

### ➤ Winch Conversion Kit



Product Code	Description
US-RAPG000077	Porta Gantry A-frame Conversion Winch Ready Kit

### ➤ Winch Brackets



Personnel Winch Brackets		
Supported Device	Product Code	
	Trap Plate	Column
Guardian Checkmate	US-RAWB001220	US-RAWB001200
IKAR PLW	US-RAWB004225	US-RAWB004200
MSA Workman	US-RAWB008220	US-RAWB008000
3M SALA Winch	US-RAWB003522	US-RAWB003000
3M DBI SALA Digital Winch	US-RAWB003522	US-RAWB003000
Tuffbuilt Pro Series 1	US-RAWB009225	US-RAWB009200
Tuffbuilt Pro Series 2	US-RAWB009325	US-RAWB009300

SRL Device Brackets		
Supported Device	Product Code	
	Trap Plate	Column Attachments
Guardian FABXR	US-RAWB001020	US-RAWB001000
3M Rebel Protect A	US-RAWB003522	US-RAWB003000
SALA Sealed Block	US-RAWB003522	US-RAWB003000
3M Sala Ultra-Lok	US-RAWB003520	US-RAWB003000
Guardian 3-Way	US-RAWB007020	US-RAWB007000
Honeywell/Miller	US-RAWB007520	US-RAWB007500
MSA Rescuer	US-RAWB008020	US-RAWB008000

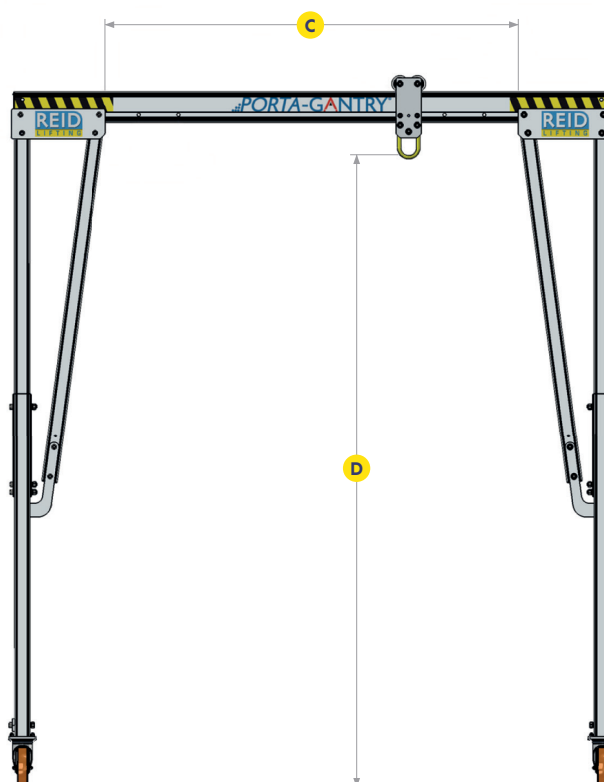
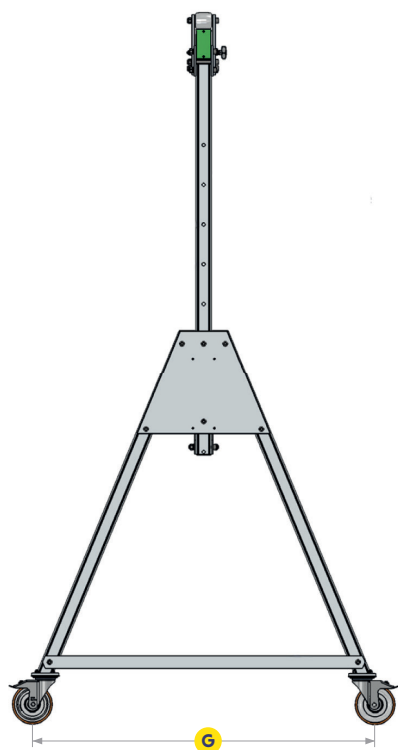
## PORTAGANTRY®



### Key features

- ANSI Z359.18-17 compliant up to 3 users
- OSHA 1910 sub part I (.140) and 1926 sub part M compliant\*
- ATEX certified [Zone 2 standard, Zone 1 as an option]
- Fall arrest capacity – 1-3 users [330lb max per person]
- Personnel capacity up to 5500lb
- Goods capacity up to 11000lb
- Gated Trolley for attaching fall arrest devices
- Winch conversion available and a range of winch brackets
- Wind up Jack Legs available for uneven ground
- Beam comes with integrated carry handles for ease of transportation
- Multiple holes along the beam provides easy adjustment of beam length on the A-frame
- A variety of beam lengths which can be interchanged

\* OSHA compliance max 5 users – MAF dependent on number of users







		Capacity [lb]							
		Product Code	C Clear Operating Span	Dmax Max height to lifting eye	Dmin Min height to lifting eye	G Width	Fall Arrest Capacity** No. of Person(s)	Personnel Lifting [lb]	Unit Weight [lb]
4400	Small	US-PGSS04400S-8A	5' 2¼"	7' 8¾"	5' 2¾"	3' 11¾"	2	2200	196
		US-PGSS04400S-10A	6' 9¾"	7' 8¾"	5' 2¾"	3' 11¾"	2	2200	203
		US-PGSS04400S-13A	9' 10"	7' 8¾"	5' 2¾"	3' 11¾"	2	2200	218
		US-PGSS04400S-15A	11' 11¾"	7' 8¾"	5' 2¾"	3' 11¾"	2	2200	229
		US-PGSS04400S-18B	15' ¼"	7' 8¾"	5' 2¾"	3' 11¾"	2	2200	269
		US-PGSS04400S-27D	24' 6½"	7' 7 ¼"	5' 1 ¾"	3' 11¾"	2	2200	441
	Intermediate	US-PGSS04400I-10A	6' 9¾"	10' 5"	7' 1¾"	5' 8"	1	2200	269
		US-PGSS04400I-13A	9' 10"	10' 5"	7' 1¾"	5' 8"	1	2200	284
		US-PGSS04400I-15A	11' 11¾"	10' 5"	7' 1¾"	5' 8"	1	2200	295
		US-PGSS04400I-18B	15' ¼"	10' 5"	7' 1¾"	5' 8"	1	2200	335
		US-PGSS04400I-27D	24' 6½"	10' 4"	7' ¾"	5' 8"	1	2200	507
	Tall	US-PGSS04400T-10A	6' 9¾"	13' 4 ¾"	9' 5"	6' 7¼"	1	2200	295
		US-PGSS04400T-13A	9' 10"	13' 4 ¾"	9' 5"	6' 7¼"	1	2200	311
		US-PGSS04400T-15A	11' 11¾"	13' 4 ¾"	9' 5"	6' 7¼"	1	2200	322
		US-PGSS04400T-18B	15' ¼"	13' 4 ¾"	9' 5"	6' 7¼"	1	2200	362
		US-PGSS04400T-27D	24' 6½"	13' 3"	9' 3¾"	6' 7¼"	1	2200	534
	Extra Tall	US-PGSS04400TC1-13A	9' 10"	19' 1"	13' 2"	8' 11½"	2	2200	512
		US-PGSS04400TC1-15A	11' 11¾"	19' 1"	13' 2"	8' 11½"	2	2200	523
		US-PGSS04400TC1-18B	15' ¼"	19' 1"	13' 2"	8' 11½"	2	2200	562
		US-PGSS04400TC1-27D	24' 6½"	19'	13' 1"	8' 11½"	2	2200	734
6600	Intermediate	US-PGSS06600I-10A	6'9¾"	10'5"	7'1¾"	5'8"	2	3300	371
		US-PGSS06600I-13B	9'10"	10'5"	7'1 ¾"	5'8"	3	3300	403
		US-PGSS06600I-15B	11'11¾"	10'5"	7'1 ¾"	5'8"	3	3300	417
		US-PGSS06600I-18D	15'¼"	10' 4"	7' ¾"	5'8"	3	3300	509
		US-PGSS06600I-27D	24'6½"	10' 4"	7' ¾"	5'8"	2	3300	608
	Tall	US-PGSS06600T-10A	6' 9¾"	13' 4 ¾"	9' 4 ¾"	6' 7 ½"	2	3300	422
		US-PGSS06600T-13B	9' 10"	13' 4 ¾"	9' 4 ¾"	6' 7 ½"	2	3300	455
		US-PGSS06600T-15B	11' 11¾"	13' 4 ¾"	9' 4 ¾"	6' 7 ½"	2	3300	469
		US-PGSS06600T-18D	15' ¼"	13' 3"	9' 3¾"	6' 7 ½"	2	3300	561
		US-PGSS06600T-27D	24' 6½"	13' 3"	9' 3¾"	6' 7 ½"	2	3300	660
	Extra Tall	US-PGSS06600TC2-13B	9'10"	18'1¼"	12'10¾"	8'11½"	2	3300	510
		US-PGSS06600TC2-15B	11'11¾"	18'1¼"	12'10¾"	8'11½"	2	3300	523
		US-PGSS06600TC2-18D	15'¼"	18' ¼"	12' 9 ¼"	8'11½"	2	3300	615
		US-PGSS06600TC2-27D	24'6½"	18' ¼"	12' 9 ¼"	8'11½"	2	3300	714
11000	Intermediate	US-PGSS11000IR-10D	6'10¾"	10'4"	7' ¾"	5'8¼"	3	5500	537
		US-PGSS11000IR-13D	9'10½"	10'4"	7' ¾"	5'8¼"	3	5500	570
		US-PGSS11000IR-15D	12'	10'4"	7' ¾"	5'8¼"	3	5500	593
		US-PGSS11000IR-18D	15' ¾"	10'4"	7' ¾"	5'8¼"	3	5500	624
	Tall	US-PGSS11000TR-15D	11' 11¾"	13' 3½"	9' 4¼"	6' 7½"	3	5500	659
		US-PGSS11000TR-18D	15' ¼"	13' 3½"	9' 4¼"	6' 7½"	3	5500	690
	Extra Tall	US-PGSS11000TC3R-13D	9'10½"	16'4½"	12'5¼"	8'4¾"	3	5500	580
		US-PGSS11000TC3R-15D	12'	16'4½"	12'5¼"	8'4¾"	3	5500	600
		US-PGSS11000TC3R-18D	15' ¾"	16'4½"	12'5¼"	8'4¾"	3	5500	633

\*For total beam length incread beam length by 3'





# Confined Spaces

Confined spaces come in all shapes and sizes and that's why our products do too.

Confined spaces can be deadly and many people are killed or seriously injured in confined spaces each year, including people trying to rescue others due to lack of training, competency or proper equipment. Hazardous substances, such as invisible gases or dangerous conditions like explosion risk, heat, flood water or unstable surfaces are commonplace.

Work in confined spaces must be properly planned by qualified and competent people and having the right equipment to enable access, egress and rescue is essential.

Our products for gaining access to and working safely in confined spaces, provide customers with an extensive

range of highly portable, lightweight solutions that give customers maximum choice and flexibility to fit a wide variety of openings and different work site scenarios.

Portability is combined with the choice to utilize permanent structural anchors where it is necessary, practical or convenient to do so.

Our products strength to weight ratios are industry leading, providing anchorages for multiple users in many cases, high levels of safety and greater lifting capacities for maximum efficiency.

All products are available with a range of accessories for the fitment of winches and self retracting lifelines.



## Our **confined space access** product solutions



### **PORTX** DAVIT

The highest quality davit in personnel safety. Dual rear-mounted winches allow the team increased freedom around guardrails and obstacles, while the additional anchor point gives the top man confidence in safety. Also providing dual functionality for goods lifting.



### **TDAVIT**

A portable davit system providing an anchor point for confined space access work where a greater height of lift or Reach is required. Also providing dual functionality for lifting equipment and machinery.



### **PORTA** DAVIT **QUANTUM**

A portable davit system providing the ultimate in lightweight portability for confined space access work, whilst also providing dual functionality for lifting equipment and machinery.



### **PORTA** BASE

Our range of portable bases for those occasions where permanently installed sockets are not viable, also enabling the use of our Davit range including the **PORTX** DAVIT, **TDAVIT** and **PORTA** DAVIT **QUANTUM**.



### **PORTA** GANTRY **RAPIDE**

For the ultimate in convenience, functionality, strength and stability. For use as an overhead anchor system for multiple users, as an alternative to a tripod, providing greater span and height of lift and a higher capacity with dual functionality for lifting equipment and machinery up to 2200lb.



### **PORTA** GANTRY

For very large openings our **PORTA** GANTRY range with winch ready options and a variety of beam lengths of up to 27' 6 3/4" could also be used [see Working At Height section for more details].



# PORTX<sup>®</sup> DAVIT

Our unique personal safety davit has been engineered with the user in mind. Two rear-mounted winches allow the davit to be closer to guardrails, walls and other obstacles without being impeded, this also allows for a shorter beam with a similar reach due to its placement.

We offer a wide range of brackets which can support a variety of popular personnel winches and SRL devices from market-leading winch manufacturers. The top man also gains confidence as the built-in shackle point in the cheek plates gives confidence in safety during the lift.



This product is patented

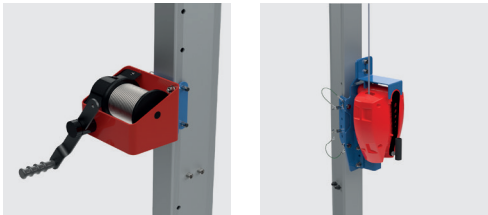


Key features

- OSHA Compliant
- Conforms with and tested as a complete safety system including brackets to ANSI Z359.18 2017
- ATEX Zone 2 certification as standard
- ATEX Zone 1 optional upgrade
- Can support goods lifting up to 660lb and personnel lifting up to 330lb
- 3-piece design for ease of transportation and storage and comes with a carry bag
- Ability to locate two safety or lifting devices on the rear column of the davit, enabling primary and secondary safety or a combination of personnel and goods lifting
- Variable bracket mounting positions for better ergonomics
- Additional fall protection anchor on column for the winch operator
- Comfortable rotation under load due to Reid's patented integral bearing system
- Universal kingpin fits all Reid sockets and Portabases
- Manufactured from marine grade alloy, anodized/powder coated for high corrosion resistance
- Designed and built using quality engineering and production parts that help reduce weight and provide high strength to weight ratios.
- Can be assembled and operated by one person with no tools required

Winch Accessories

- Brackets for personnel winches and SRL devices, easily securing them to our lifting products.




Personnel Winches		
Supported Device	Product Code	
	Single Winch	Double Winch
Guardian Checkmate	US-RAWB001200	US-RAWB001209
IKAR PLW	US-RAWB004200	US-RAWB004209
MSA Workman	US-RAWB008000	US-RAWB008000
3M SALA Winch	US-RAWB003000	US-RAWB003009
3M DBI SALA Digital Winch	US-RAWB003000	US-RAWB003009

SRL Devices	
Supported Device	Product Code
Guardian FABXR	US-RAWB001000
3M Rebel Protect A	US-RAWB003000
SALA Sealed Block	US-RAWB003000
3M Sala Ultra-Lok	US-RAWB003000
Guardian 3-Way	US-RAWB007000
Honeywell/Miller	US-RAWB007500
MSA Rescuer	US-RAWB008000

## PORTX® DAVIT



 Unique and manageable 3-part davit design, bagged for easy transport and assembly.

PORTX® DAVIT					
Product Code	Description	Max personnel weight [lb]	Max Goods Weight [lb]	A	B
				Height of Lift	Reach
US-PTXDR800-20	PORTX® DAVIT 78 ¾"	330	660	78 ¾"	31 ½"
US-PTXDR800-24	PORTX® DAVIT 94 ½"	330	660	94 ½"	31 ½"
US-PTXDR800-28	PORTX® DAVIT 110 ¼"	330	660	110 ¼"	31 ½"



Redesigned cheek plates with two sheaves and a shackle point for the top man and rear captivated cable installation guide for easy set up.



Upper and lower rollers for effective double winch use, in addition to front captivated cable installation guide for easy set up.



Dual rear-mounted winch capability, strategically positioned to avoid guardrails, walls and other obstacles.



Suitable Bases & Sockets



PORTABASE®  
H Base



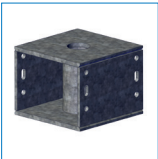
PORTABASE®  
Counterbalance



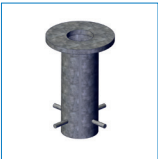
Top Mount



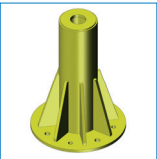
Side Mount



Bridge Mount



Flush Mount



Socket Pedestals

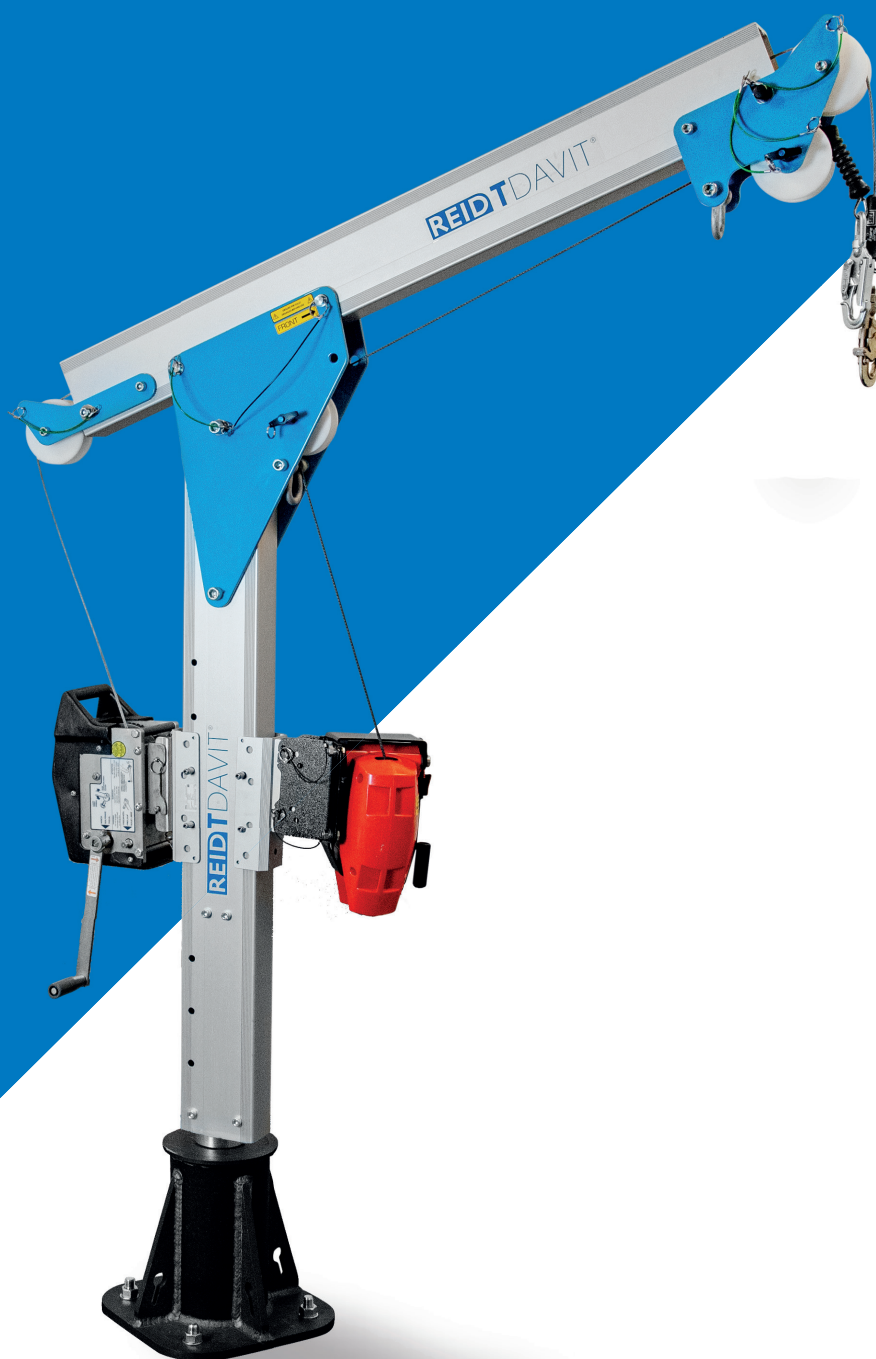


PORTABASE®  
Trailer Hitch

# TDAVIT<sup>®</sup>

Our TDAVIT Winched and Double Winched are ideal for use in confined space access and egress. Different column heights and beam options enable access to a variety of confined spaces and the durable design will ensure years of trouble free use. The TDAVIT can support a wide range of winch brackets which enables customers to

use a number of market leading winches from major manufacturers. In addition to the pulleys for use of winches and retrieval devices, this system has shackle attachment points for PPE and can lift goods up to 1320lb, providing a truly versatile piece of essential workplace equipment.



\*TDAVIT Double Winched shown  
This product is patented



ANSI  
Z359.18-17  
COMPLIANT



ATEX  
CERTIFIED



1320LB  
CAPACITY



1-2 PERSON  
ASSEMBLY



BOXED  
& BAGGED

Key features

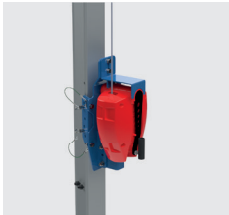
- ANSI Z359.18-17 compliant for fall protection applications
- OSHA compliant
- Suitable for goods and personnel lifting and as a fall arrest anchor point
- Personnel lifting up to 660lb
- Goods lifting up to 1320lb
- Two-piece aluminum construction for ease of transport and assembly
- Clean anodized finish and powder coated system for increased corrosion resistance
- Suitable for use with a range of REID sockets and portable bases\*
- Davit rotation possible and ease of rotation thanks to patented integral bearing system
- No fixings required, no tools required

\*Restrictions apply

Accessories

➤ Winch Brackets

Brackets for personnel winches and SRL devices, easily securing them to our lifting products. The following codes are specific to our TDAVIT® Winched or Double Winched.



Personnel Winches	
Supported Device	Product Code
Guardian Checkmate	US-RAWB001200
IKAR PLW	US-RAWB004200
MSA Workman	US-RAWB008000
3M SALA Winch	US-RAWB003000
3M DBI SALA Digital Winch	US-RAWB003000
Tuffbuilt Pro Series 1	US-RAWB009200
Tuffbuilt Pro Series 2	US-RAWB009300

SRL Devices	
Supported Device	Product Code
Guardian FABXR	US-RAWB001000
3M Rebel Protect A	US-RAWB003000
SALA Sealed Block	US-RAWB003000
3M Sala Ultra-Lok	US-RAWB003000
Guardian 3-Way	US-RAWB007000
Honeywell/Miller	US-RAWB007500
MSA Rescuer	US-RAWB008000

➤ Rotational Handle

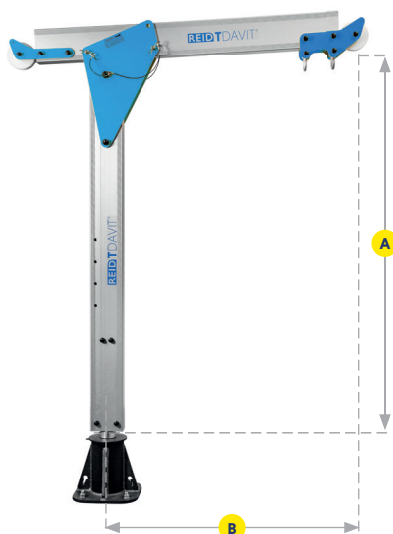
We offer a rotational Davit handle, fit for attachment to the column to make rotation of the davit, especially while under load, much easier and safer.



Product Code	Description
US-RATD000006	Rotation Handle to suit T-Davit and PDQ



## TDAVIT® Winched



### Key features

- ANSI Z359.18-17 compliant
- OSHA 1910 sub part I (.140) and 1926 sub part M compliant – MAF dependent on Davit reach
- ATEX certified [Zone 2 standard, Zone 1 as an option]
- Fall arrest capacity – 1 user
- Personnel capacity up to 660lb
- Goods capacity up to 1320lb
- Sheave front and rear of beam for winch rope or winch cable
- Double shackle head for lifting or attachment of PPE
- Winch bracket options available for a variety of winches and retrieval SRL's
- Comes with a carry bag
- Suitable for use with our range of sockets and portable bases\*

\* Restrictions apply

TDAVIT® Winched						
Product Code	Description	System weight [lb]	Goods Capacity [lb]	Personnel Capacity [lb]	A Height of Lift	B Reach
US-TDWA3A0	T-Davit Type W Column option 3 Beam option 0	76	1320	660	50¾" - 60¾"	29¼" - 31½"
US-TDWA3A1	T-Davit Type W Column option 3 Beam option 1	77	1100	550	51¼" - 63½"	36½" - 39¼"
US-TDWA3A2	T-Davit Type W Column option 3 Beam option 2	79	1100	550	51½" - 66½"	43¾" - 47¼"
US-TDWA4A0	T-Davit Type W Column option 4 Beam option 0	80	1320	660	63¾" - 73"	29¼" - 31½"
US-TDWA4A1	T-Davit Type W Column option 4 Beam option 1	82	1100	550	63½" - 76"	36½" - 39¼"
US-TDWA4A2	T-Davit Type W Column option 4 Beam option 2	84	1100	550	64" - 79"	43¾" - 47¼"
US-TDWA5A0	T-Davit Type W Column option 5 Beam option 0	87	1320	660	75½" - 85¼"	29¼" - 31½"
US-TDWA5A1	T-Davit Type W Column option 5 Beam option 1	88	1100	550	75¾" - 88¼"	36½" - 39¼"
US-TDWA5A2	T-Davit Type W Column option 5 Beam option 2	91	1100	550	76¼" - 91¼"	43¾" - 47¼"

## Suitable Sockets & Bases



Top Mount



Side Mount



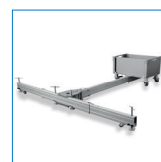
Bridge Mount



Flush Mount



**PORTABASE\*\***  
H-Base



**PORTABASE\*\***  
Counterbalance

\*Restricted to 31 ½" reach only

\*\*Restricted to 39" reach only

TDAVIT® Double Winched



\*Winches and Winch Brackets sold separately

Key features

- ANSI Z359.18-17 compliant
- OSHA 1910 sub part I (.140) and 1926 sub part M compliant – MAF dependent on Davit reach
- ATEX certified [Zone 2 standard, Zone 1 as an option]
- Fall arrest capacity – 1 user
- Personnel capacity up to 660lb
- Goods capacity up to 1320lb
- Double sheave front and rear of beam for winch rope or winch cable
- Double shackle head for lifting or attachment of PPE
- Winch bracket options available for a variety of winches and retrieval SRL's
- Comes with a carry bag
- Suitable for use with our range of sockets and portable bases\*

\* Restrictions apply

TDAVIT® Double Winched						
Product Code	Description	System weight [lb]	Goods Capacity [lb]	Personnel Capacity [lb]	A	B
					Height of Lift	Reach
US-TDDWA3A0	T-Davit Type DW Column option 3 Beam option 0	76	1320	660	50¾" - 60¾"	29¾" - 31½"
US-TDDWA3A1	T-Davit Type DW Column option 3 Beam option 1	77	1100	550	51¼" - 63½"	36½" - 39¼"
US-TDDWA3A2	T-Davit Type DW Column option 3 Beam option 2	79	1100	550	51½" - 66½"	43¾" - 47¼"
US-TDDWA4A0	T-Davit Type DW Column option 4 Beam option 0	79	1320	660	63¾" - 73"	29¾" - 31½"
US-TDDWA4A1	T-Davit Type DW Column option 4 Beam option 1	82	1100	550	63½" - 76"	36½" - 39¼"
US-TDDWA4A2	T-Davit Type DW Column option 4 Beam option 2	84	1100	550	64" - 79"	43¾" - 47¼"
US-TDDWA5A0	T-Davit Type DW Column option 5 Beam option 0	86	1320	660	75½" - 85¼"	29¾" - 31½"
US-TDDWA5A1	T-Davit Type DW Column option 5 Beam option 1	88	1100	550	75¾" - 88¼"	36½" - 39¼"
US-TDDWA5A2	T-Davit Type DW Column option 5 Beam option 2	91	1100	550	76¼" - 91¼"	43¾" - 47¼"

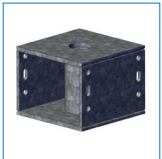
Suitable Sockets & Bases



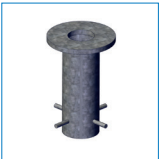
Top Mount



Side Mount



Bridge Mount



Flush Mount



PORTABASE®\*  
H-Base



PORTABASE®\*\*  
Counterbalance

\*Restricted to 31 ½" reach only

\*\*Restricted to 39" reach only

# > PORTADAVIT QUANTUM<sup>®</sup>

Our **PORTADAVIT<sup>®</sup> QUANTUM<sup>®</sup>** is ideal for use in confined space access and egress tasks where lightweight portability is the key priority. A variety of models and accessories provide simple

customization for specific work environments and building configurations. This product can be used with our range of fixed sockets or **PORTABASE<sup>®</sup>** systems.



\*US-PDQ1W variant shown  
This product is patented



ATEX  
CERTIFIED



1320LB  
CAPACITY



1 PERSON  
ASSEMBLY



BOXED  
& BAGGED



Key features

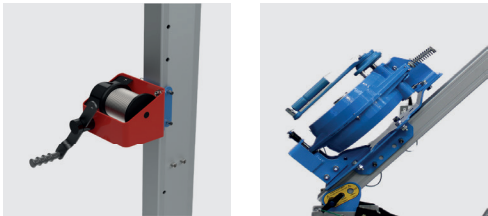
- OSHA compliant
- ANSI Z359.18-17 anchor point
- Suitable for ATEX environments
- Suitable for goods and personnel lifting and as a fall arrest anchor point
- Personnel lifting up to 660lb
- Goods lifting up to 1320lb
- One piece aluminum construction for ease of transport and assembly
- Suitable for use with all REID sockets and portable bases\*
- Davit rotation possible and ease of rotation thanks to patented integral bearing system
- No fixings required, no tools required

\*Restrictions apply

Accessories

➤ Winch Brackets

Brackets for personnel winches and SRL devices, easily securing them to our lifting products. The following codes are specific to our **PORTA**DAVIT<sup>[QUANTUM]</sup>, with a number of configurations available. For more information on these configuration please see the compatibility matrix at reidlifting.com.



Personnel Winch Brackets		
Supported Device	Product Code	
	Column*	Backstay
Guardian Checkmate	US-RAWB001200	US-RAWB001206
IKAR PLW	US-RAWB004200	US-RAWB004206
MSA Workman	US-RAWB008000	US-RAWB008006
3M SALA Winch	US-RAWB003000	US-RAWB003003
3M DBI SALA Digital Winch	US-RAWB003000	US-RAWB003003
Tuffbuilt Pro Series 1	US-RAWB009200	US-RAWB009206
Tuffbuilt Pro Series 2	US-RAWB009300	US-RAWB009306

SRL Device Brackets			
Supported Device	Product Code		
	Column*	Backstay (Single Winch)	Backstay (Double Winch)
Guardian FABXR	US-RAWB001000	US-RAWB001000	US-RAWB001010
3M Rebel Protect A	US-RAWB003000	US-RAWB003006	US-RAWB003010
SALA Sealed Block	US-RAWB003000	US-RAWB003006	US-RAWB003010
3M Sala Ultra-Lok	US-RAWB003000	US-RAWB003006	US-RAWB003010
Guardian 3-Way	US-RAWB007000	US-RAWB007000	US-RAWB007010
Honeywell/Miller	US-RAWB007500	US-RAWB007500	US-RAWB007510
MSA Rescuer	US-RAWB008000	US-RAWB008006	N/A

\*Additional sheave kit required when using any column-mounted winch.

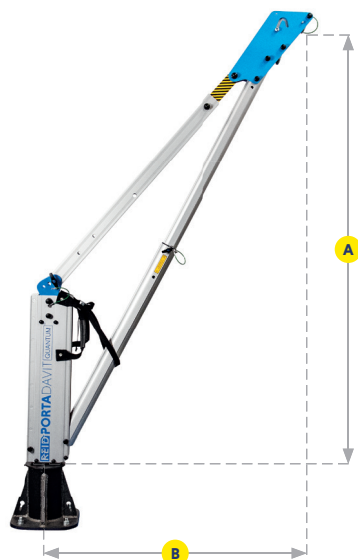
➤ Rotational Handle

We offer a rotational Davit handle, fit for attachment to the column to make rotation of the davit, especially while under load, much easier and safer.



Product Code	Description
US-RATD000006	Rotation Handle to suit T-Davit and PDQ

## PORTADAVIT QUANTUM®

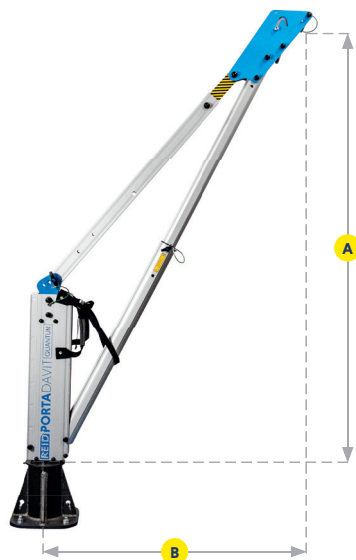


### Key features

- OSHA 1910 sub part I (.140) and 1926 sub part M compliant – MAF 6kN [1350lb]
- ATEX certified [Zone 2 standard, Zone 1 as an option]
- Fall arrest capacity – 1 user
- Personnel capacity up to 660lb
- Goods capacity up to 1320lb
- Three Reach adjustment points
- Double shackle head for easy attachment of accessories
- Double sheave head for winches and SRL
- Suitable for use with our range of Top Mount, Side Mount, Bridge Mount and Cast In sockets

PORTADAVIT QUANTUM® 1 Winched				
Product Code	Description	System weight [lb]	A	B
			Height of Lift	Reach
US-PDQ1W	Porta-Davit Quantum Rigid Backstay Winch Ready. 1320lb capacity, 47" max reach	50	83"	47"

## PORTADAVIT QUANTUM®



### Key features

- OSHA 1910 sub part I (.140) and 1926 sub part M compliant – MAF 6kN [1350lb]
- ATEX certified [Zone 2 standard, Zone 1 as an option]
- Fall arrest capacity – 1 user
- Personnel capacity up to 550lb
- Goods capacity up to 1100lb
- Three Reach adjustment points
- Double shackle head for PPE attachment
- Double sheave head for winches and SRL
- Suitable for use with our full range of Top Mount, Side Mount, Bridge Mount and Cast In sockets

PORTADAVIT QUANTUM® 2 Winched				
Product Code	Description	System weight [lb]	A	B
			Height of Lift	Reach
US-PDQ2W	Porta-Davit Quantum Rigid Back stay Winch Ready. 1100lb capacity, 59" max reach	51	77"	59"

PORTADAVIT<sup>®</sup> QUANTUM<sup>®</sup>



Key features

- OSHA 1910 sub part I (.140) and 1926 sub part M compliant – MAF 8kN [1800lb]
- ATEX certified [Zone 2 standard, Zone 1 as an option]
- Fall arrest capacity – 1 user
- Personnel capacity up to 660lb
- Goods capacity up to 1320lb
- Fixed 31½" reach
- Double shackle head for easy attachment of accessories
- Double sheave head for winches and SRL
- Suitable for use with our range of Top Mount, Side Mount, Bridge Mount and Cast In sockets
- Suitable for use with our **PORTABASE** Counterbalance and H Base

PORTADAVIT <sup>®</sup> QUANTUM <sup>®</sup> Reduced Reach				
Product Code	Description	System weight [lb]	A	B
			Height of Lift	Reach
US-PDQRW	Porta-Davit Quantum Rigid Backstay Winch Ready. 1320lb capacity, 31½" max reach	50	81¾"	31½"

Suitable Sockets & Bases



Top Mount



Side Mount



Bridge Mount



Flush Mount



PORTABASE<sup>®</sup>\*  
H-Base



PORTABASE<sup>®</sup>\*\*  
Counterbalance

\*Restricted to 3 ½" Reach only

\*\*Restricted to 39" Reach only.



# PORTABASE®

Our **PORTABASE®** Counterbalance, Trailer Hitch and H-Base systems can be used for confined space access and egress applications on largely level surfaces, where fixed anchors are not available or desirable. Height adjustment enables

use on surfaces that are not entirely level up to a 5 degree pitch. Additionally, we have our **PORTX®** Saddle Mount to enable utilization of our davits in trenching and shoring applications.



ANSI  
Z359.18-17  
COMPLIANT



1320LB  
CAPACITY



1-2 PERSON  
ASSEMBLY



MODULAR  
DESIGN

\*Counterbalance system shown with US-PDQ1W, Winch and Fall Arrest Device

Key features

- ANSI Z359.18-17 compliant for fall protection applications\*
- OSHA compliant
- Suitable for goods and personnel lifting and as a fall arrest anchor point
- Personnel lifting up to 660lb
- Goods lifting up to 1320lb
- Modular aluminum construction for ease of transport and assembly
- Suitable for use with the TDAVIT®, PORTADAVIT<sup>QUANTUM</sup> and PORTX<sup>®</sup> DAVIT to provide a highly portable confined space access solution\*
- Davit rotation for personnel recovery
- Leveling feet designed to support the system on uneven ground, as standard
- Height Adjustable feet to allow for uneven ground levels for the Counterbalance
- Integrated swivel castors, as standard with the Counterbalance
- No fixings required, no tools required

\* A range of options available

Counterbalance Basket Height Adjustment



Product Code	Description
US-RAPBCB0001	Porta Base Counterbalance Basket Height Adjustment Kit

Product Combinations



PORTABASE<sup>®</sup>  
Counterbalance

+



TDAVIT<sup>®</sup>  
Double Winched

+



Personnel  
Winch

+



Fall Arrest  
Device

=

Solution for  
Confined  
Space Access



PORTABASE<sup>®</sup>  
Trailer Hitch

+



TDAVIT<sup>®</sup>  
Double Winched

+



Personnel  
Winch

+



Fall Arrest  
Device

=

Solution for  
Confined  
Space Access



PORTABASE<sup>®</sup>  
H Base

+



PORTADAVIT<sup>QUANTUM</sup>  
Reduced Reach

+



Personnel  
Winch

+



Fall Arrest  
Device

=

Solution for  
Confined  
Space Access



PORTX<sup>®</sup>  
Saddle Mount

+



PORTX<sup>®</sup>  
DAVIT

+



Personnel  
Winch

+

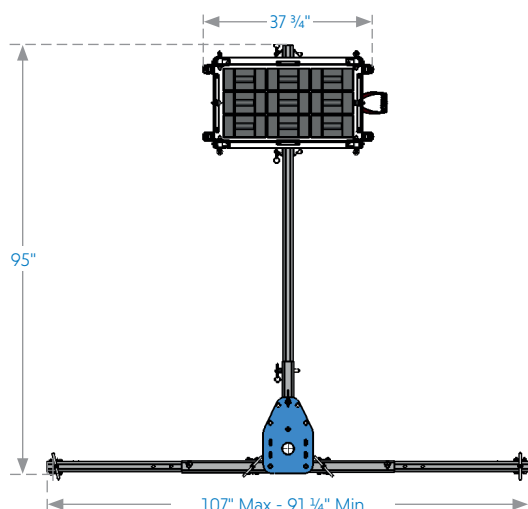


Fall Arrest  
Device

=

Solution for  
Confined  
Space Access

## PORTABASE® Counterbalance



### Key features

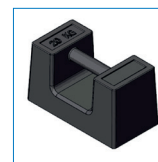
- OSHA 1910 sub part I (.140) and 1926 sub part M compliant when used with a Davit up to a 39" reach – MAF dependent on Davit reach
- ANSI Z359.18-17 compliant when used with a Davit up to a 31½" reach
- Suitable for use with the **TDAVIT®**, **PORTADAVIT<sup>QUANTUM</sup>** Reduced Reach or **PORTX®** DAVIT to provide a highly portable confined space access solution\* to provide a highly portable confined space solution\*
- Fall arrest capacity – 1 user\*\*
- Personnel capacity up to 660lb
- Goods capacity up to 1320lb
- Suitable for use with other **TDAVIT** systems [refer to product brochure for more information]
- 270° Davit rotation possible

\* Restrictions apply

\*\*Fall protection and rope access applications require 800-1100lb hand weights

PORTABASE® Counterbalance			
Product Code	Description	System Weight [lb]	Max Reach
US-PBCB00001	Porta Base Counterbalance Standard	172	39"

PORTABASE® Counterbalance Accessories			
US-RAHW00001	Hand Weight (1 x 44lb)	44	
US-RAHW00003	Hand Weight Set (18 x 44lb)	794	
US-RAHW00004	Hand Weight Set (27 x 44lb)	1190	



Hand Weight

## Basket Height Adjustment

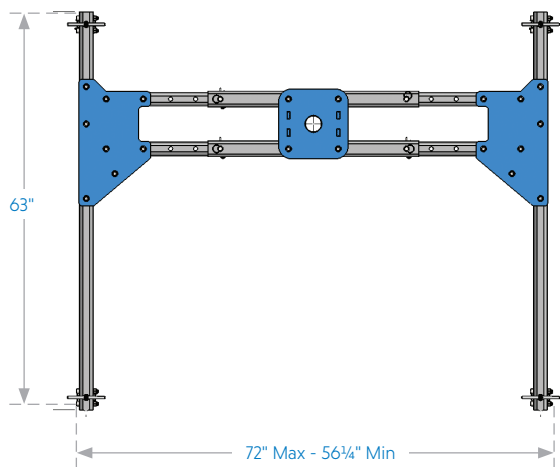


### Key features

- Fitted to the **PORTABASE®** Counterbalance basket
- Provides an added height adjustment of 9"
- Rapid attachment to the basket
- Each foot can be adjusted independently providing a method of leveling the system on uneven ground

PORTABASE® Counterbalance Accessories		
Product Code	Description	System Weight [lb]
US-RAPBCB00001	Porta Base Counterbalance Basket Height Adjustment Kit	22.5

PORTABASE® H Base



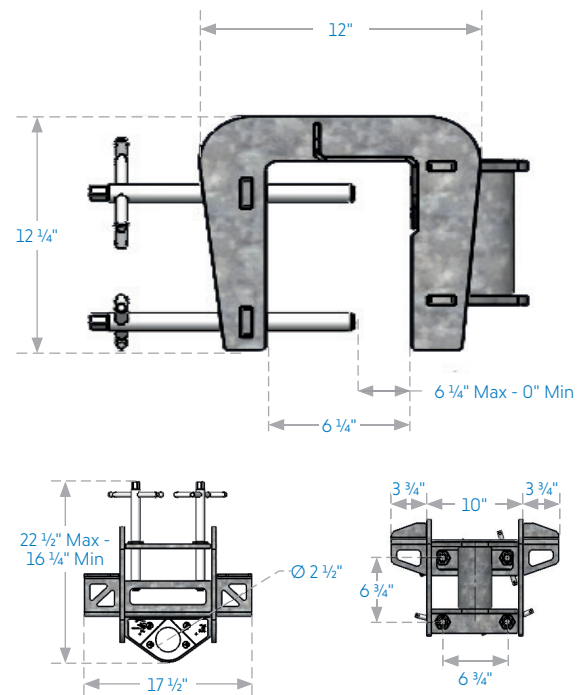
Key features

- OSHA 1910 sub part I (.140) and 1926 sub part M compliant when used with a Davit up to a 31½" reach – MAF dependent on Davit reach
- ANSI Z359.18-17 compliant when used with a Davit up to a 31½" reach
- Suitable for use with the TDAVIT®, PORTADAVIT<sup>QUANTUM</sup>® reduced Reach or PORTX® DAVIT to provide a highly portable confined space access solution\*
- Fall arrest capacity – 1 user
- Personnel capacity up to 660lb
- Goods capacity up to 1320lb
- 180° Davit rotation possible

\* Restrictions apply

PORTABASE® H Base			
Product Code	Description	System Weight [lb]	Max Reach
US-PBHB00001	Porta Base H Base Standard	140	31½"

PORTX® Saddle Mount



Key features

- OSHA compliant
- Suitable for use with davits up to a maximum reach of 47"
- Fall arrest capacity – 1 user
- Personnel capacity up to 330lb\*
- Goods capacity up to 660lb\*
- Galvanized steel construction
- Designed for use in trenching and shoring applications subject to structural validation

\*Dependant on Davit Operational Arc [See Assembly & Operation Guide for further information]

PORTX® Saddle Mount			
Product Code	Description	System Weight [lb]	Max Reach
US-PTXTM0-160	PortX Saddle Mount - Max 47 ¼" Reach	50	47 ¼"



# PORTAGANTRY RAPIDE<sup>®</sup>

Our **PORTAGANTRY RAPIDE**<sup>®</sup> is a single piece, foldable gantry with unrivalled versatility. A highly portable system which can be assembled by a trained person in just one minute, making it ideal for emergency situations. This system offers an overhead anchor point for multiple users in confined space tasks and can be dressed

to enable access and egress with a winch and secondary fall arrest device. This system also provides versatility for lifting goods up to 2200lb. This system is highly customisable to meet unique lifting requirements, with a variety of height configurations and beam lengths.



This product is patented



ANSI  
Z359.18-17  
COMPLIANT



ATEX  
CERTIFIED



2200LB  
CAPACITY



1-2 PERSON  
ASSEMBLY



81-151LB  
COMPACT  
STORAGE

## Key features

- ANSI Z359.18-17 compliant for fall protection applications
- OSHA compliant
- Suitable for goods and personnel lifting and as a fall arrest anchor point
- Personnel lifting up to 1100lb
- Goods lifting up to 2200lb
- Fall protection capacity up to 3 users
- One piece aluminum construction for ease of transport and assembly
- 360° lockable, height adjustable swivel castors to enable movement in the location of use
- A range of trolley options and sheave carriers designed for quick attachment to the beam
- Winch ready accessories for lowering and rescue
- A range of height adjustment and beam lengths up to 4m to meet specific customer need

## Accessories

### ➤ Trolley Options



Product Code	Description
US-PGTXR01100	Close Coupled Trolley up to 1100lb
US-PGTXR02200	Close Coupled Trolley up to 2200lb
US-PGTZR01100	Master Link Trolley up to 1100lb
US-PGTZR02200	Master Link Trolley up to 2200lb

### ➤ Sheave Carriers



Product Code	Description	Capacity [lb]
US-PGTTR01100	PGR Double Sheave Carrier	1100lb
US-PGTUR01100	PGR Single Sheave Carrier	1100lb
US-PGTTR02200	PGR 1T Double Sheave Carrier	1100lb
US-PGTUR02200	PGR 1T Single Sheave Carrier	1100lb

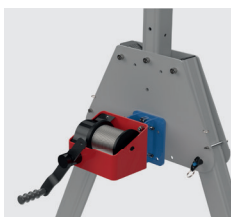
### ➤ Sheave



Product Code	Description
US-RAPGR00032	Rapide Universal Sheave and Ball Lock Pin Set

One sheave required for every winch used on the system.

### ➤ Winch Brackets



Personnel Winches	
Supported Device	Product Code
Guardian Checkmate	US-RAWB001220
IKAR PLW	US-RAWB004220
MSA Workman	US-RAWB008220
3M SALA Winch	US-RAWB003520
3M DBI SALA Digital Winch	US-RAWB003520
Tuffbuilt Pro Series 1	US-RAWB009220
Tuffbuilt Pro Series 2	US-RAWB009320

SRL Devices	
Supported Device	Product Code
Guardian FABXR	US-RAWB001020
3M Rebel Protect A	US-RAWB003520
SALA Sealed Block	US-RAWB003520
3M Sala Ultra-Lok	US-RAWB003525
Guardian 3-Way	US-RAWB007020
Honeywell/Miller	US-RAWB007520
MSA Rescuer	US-RAWB008020

# PORTAGANTRY RAPIDE®

## PORTAGANTRY RAPIDE® 880-1100lb

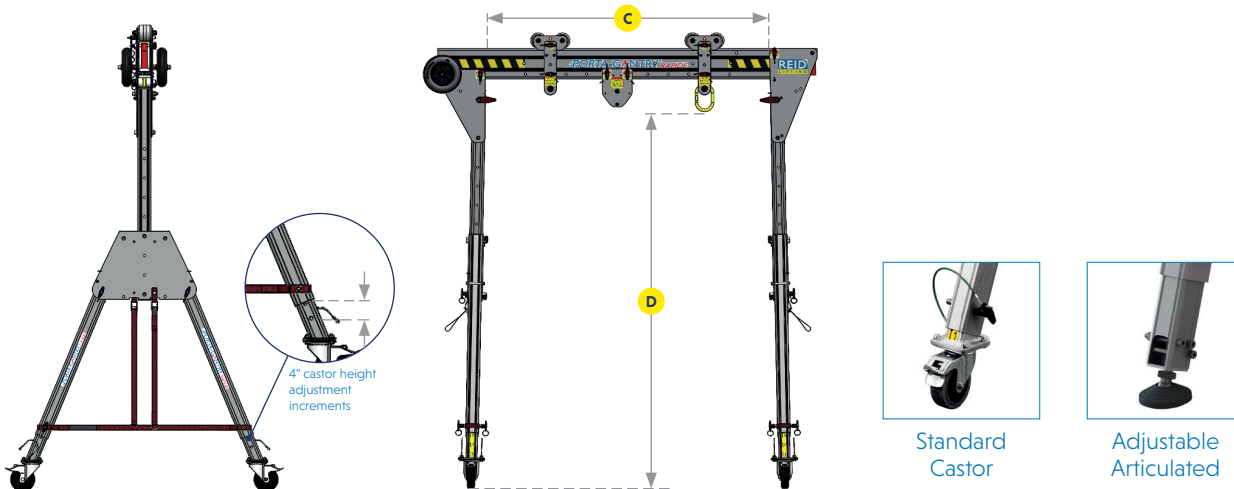


### Key features

- ANSI Z359.18-17 compliant for up to 1 user
- OSHA 1910 sub part I (.140) and 1926 sub part M compliant – MAF dependent on number of users
- ATEX certified [Zone 2 standard]\*
- Fall arrest capacity – up to 3 users
- Personnel capacity up to 550lb
- Goods capacity up to 1100lb
- Gated trolley options and sheave carriers for attaching fall arrest devices
- Winch ready accessories for lowering and rescue
- Easy height adjustment

\*Can be supplied with all stainless steel fixings or marine specification as a custom request

\*Accessories sold separately



PORTAGANTRY RAPIDE® 880-1100lb						
Product Code*	Description	Weight [lb]	DMin	DMax	Fall Arrest Capacity	Goods Capacity [lb]
			Height to Lifting Eye	Height to Lifting Eye		
US-PGRS20	PORTA-GANTRY RAPIDE STANDARD with 6' 6¾" beam	81	4' 9"	6' 8¾"	1	1100
US-PGRS23	PORTA-GANTRY RAPIDE STANDARD with 7' 6½" beam	83	4' 9"	6' 8¾"	1	880
US-PGRM20	PORTA-GANTRY RAPIDE MEDIUM with 6' 6¾" beam	82	4' 9¾"	7' ¾"	1	880
US-PGRM23	PORTA-GANTRY RAPIDE MEDIUM with 7' 6½" beam	84	4' 9¾"	7' ¾"	1	880

\* Choice of foot for your system can be selected by adding a [J] for standard castors or a [K] for the adjustable articulated foot.

For Clear operating span **C** reduce length of the beam by 1' 7 ½" .

Further details and variations can be found online at [us.reidlifting.com](http://us.reidlifting.com) or in our dedicated product brochures.

PORTARAPIDE® 2200lb

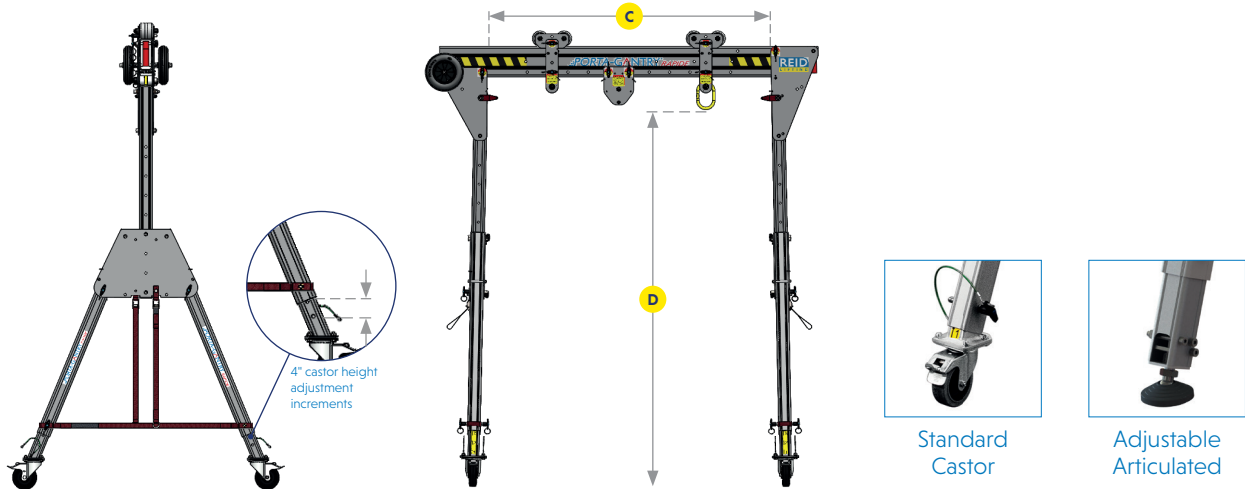


Key features

- ANSI Z359.18-17 compliant for up to 2 users
- OSHA 1910 sub part I (.140) and 1926 sub part M compliant – MAF dependent on number of users
- ATEX certified [Zone 2 standard]\*
- Fall arrest capacity – up to 3 users
- Personnel capacity up to 550lb
- Goods capacity up to 1100lb
- Gated trolley options and sheave carriers for attaching fall arrest devices
- Winch ready accessories for lowering and rescue
- Easy height adjustment

\*Can be supplied with all stainless steel fixings or marine specification as a custom request

\*Accessories sold separately



PORTA <span style="border: 1px solid black; padding: 0 2px;">RAPIDE</span> ® 2200lb						
Product Code*	Description	Weight [lb]	DMin	DMax	Fall Arrest Capacity	Goods Capacity [lb]
			Height to Lifting Eye	Height to Lifting Eye		
US-PGR1TS20	PORTA-GANTRY RAPIDE STANDARD with 6' 6¾" beam	113	4' 8¾"	6' 4"	2	2200
US-PGR1TS30	PORTA-GANTRY RAPIDE STANDARD with 9' 10" beam	124	4' 8¾"	6' 4"	2	2200
US-PGR1TS40	PORTA-GANTRY RAPIDE STANDARD with 13' 1½" beam	134	4' 8¾"	6' 4"	1	2200
US-PGR1TM20	PORTA-GANTRY RAPIDE MEDIUM with 6' 6¾" beam	122	5' 8½"	8' 0"	2	2200
US-PGR1TM30	PORTA-GANTRY RAPIDE MEDIUM with 9' 10" beam	132	5' 8½"	8' 0"	2	2200
US-PGR1TM40	PORTA-GANTRY RAPIDE MEDIUM with 13' 1½" beam	142	5' 8½"	8' 0"	1	2200
US-PGR1TT20	PORTA-GANTRY RAPIDE TALL with 6' 6¾" beam	130	9' 5½"	9' 5½"	1	2200
US-PGR1TT30	PORTA-GANTRY RAPIDE TALL with 9' 10" beam	141	9' 5½"	9' 5½"	1	2200
US-PGR1TT40	PORTA-GANTRY RAPIDE TALL with 13' 1½" beam	151	9' 5½"	9' 5½"	1	2200

\* Choice of foot for your system can be selected by adding a [J] for standard castors or a [K] for the adjustable articulated foot.  
For Clear operating span **C** reduce length of the beam by 1' 7 ½" .  
Further details and variations can be found online at [us.reidlifting.com](http://us.reidlifting.com) or in our dedicated product brochures.



# ➤ SOCKETS & PEDESTALS

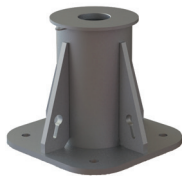
We manufacture a range of standard sockets, socket extensions and pedestals that are fully compatible with our Davit range and suitable for a variety of structures. Available in aluminium, galvanised steel and stainless steel. We can also

manufacture customised sockets and pedestals on request. Our socket extensions and pedestals are designed to provide additional height or reach over obstacles, protective rails or walls.



Our sockets are part of a fall protection and personnel lifting system, which includes a REID Lifting Davit. Only sockets manufactured by REID Lifting may be used with our Davit's. Failure to use REID sockets will invalidate any product certification and warranty and exposes the user to unnecessary and unwarranted risk. Before fixing always consult a structural engineer to confirm suitability for the loads that will be imposed during use, allowing for the required safety factors.

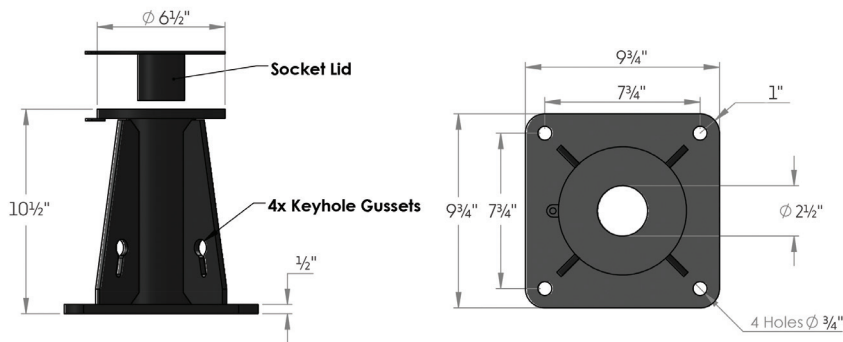
Top Mount Socket



Key features

- Secured using qty.4 5/8" anchors [not supplied]
- Suitable for resin fixing in concrete or through fixing in other substrates

Product Code	Description	Material	Weight [lb]	Compliance
US-STMG0500V2	Socket Top Mount GMS	Galvanized Steel	29	ANSI Z359.18-17, OSHA
US-STMS0500V2	Socket Top Mount 316SS	Stainless Steel	29	ANSI Z359.18-17, OSHA
US-STMA0500	Socket Top Mount Aluminum Natural Anodized	Aluminum	20	OSHA



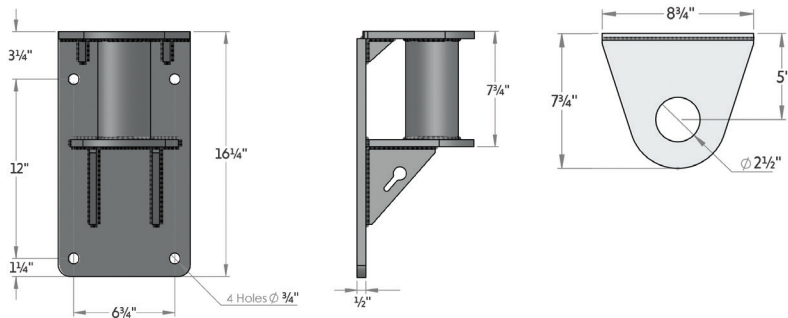
Side Mount Socket



Key features

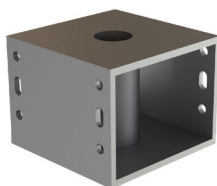
- Secured using qty.4 5/8" anchors [not supplied]
- Suitable for mounting on the side of concrete or steel structures
- A brace plate can be supplied for thin-walled concrete

Product Code	Description	Material	Weight [lb]	Compliance
US-SSMG0500V2	Socket Side Mount GMS	Galvanized Steel	29	ANSI Z359.18-17, OSHA
US-SSMS0500V2	Socket Side Mount 316SS	Stainless Steel	29	ANSI Z359.18-17, OSHA
US-SSMA0500	Socket Side Mount Aluminum Natural Anodized	Aluminum	18	OSHA



# > SOCKETS & PEDESTALS

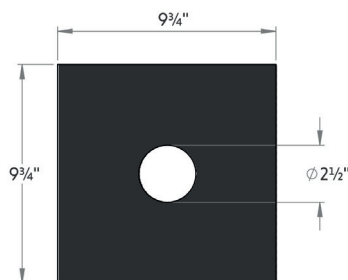
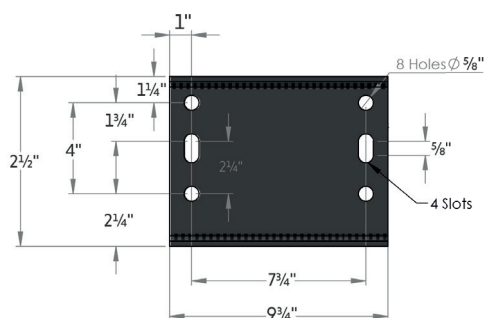
## Bridge Mount Socket



### Key features

- Secured using qty. 4  $\frac{5}{8}$ " anchors [not supplied]
- Suitable for bolting into steel structures
- Designed to fit open mesh grating or flush with structural steel work

Product Code	Description	Material	Weight [lb]	Compliance
US-SBMG0500	Socket Bridge Mount GMS	Galvanized Steel	42	OSHA
US-SBMS0500	Socket Bridge Mount 316SS	Stainless Steel	42	OSHA
US-SBMA0500	Socket Bridge Mount Aluminum Natural Anodized	Aluminum	16	OSHA



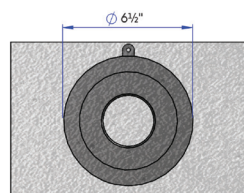
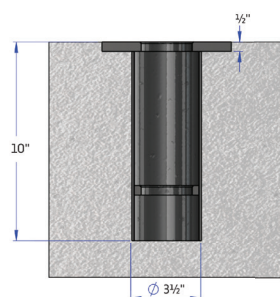
## Flush Mount Socket



### Key features

- Suitable for resin fixing in concrete
- Complete with cover and re-bars, for casting into concrete

Product Code	Description	Material	Weight [lb]	Compliance
US-SFMG0500	Socket Flush Mount GMS	Galvanized Steel	11	OSHA
US-SFMS0500	Socket Flush Mount 316SS	Stainless Steel	11	OSHA
US-SFRG0500	Socket Flush Mount Resin Bond GMS	Galvanized Steel	11	OSHA
US-SFRS0500	Socket Flush Mount Resin Bond 316SS	Stainless Steel	11	OSHA



Socket Extensions

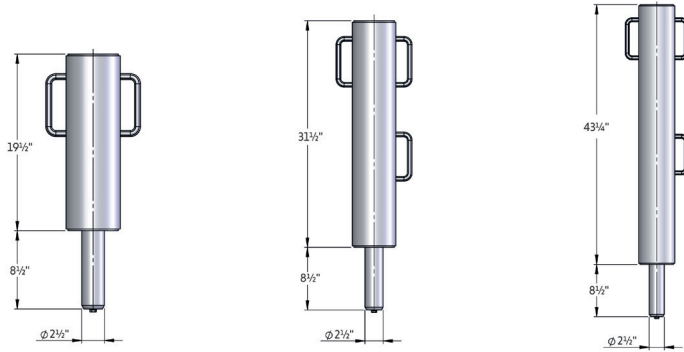


Key features

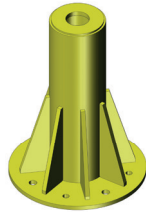
- Suitable for use with 2½" kingpin
- Integrated carry handles
- Manual handling compliant

\*Socket extensions are only suitable for use with our standard socket range and cannot be used with pedestals. For further information please contact our technical team.

Product Code	Description	Material	Weight [lb]	Compliance
US-SE0500-0500	Socket Extension 19¾"	Aluminum	27	OSHA
US- SE0500-0800	Socket Extension 31½"	Aluminum	33	OSHA
US- SE0500-1100	Socket Extension 43¾"	Aluminum	38	OSHA



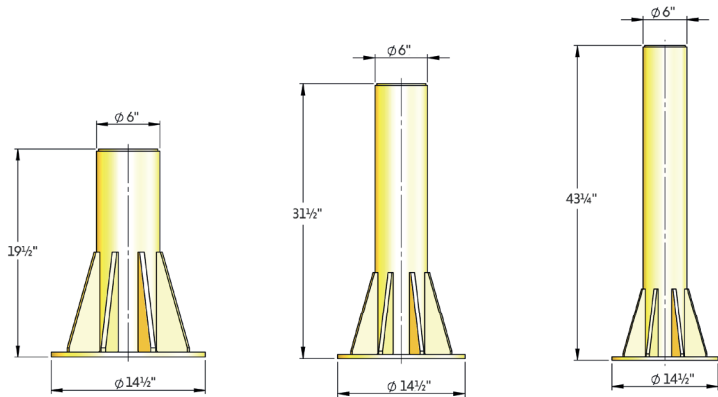
Socket Pedestals



Key features

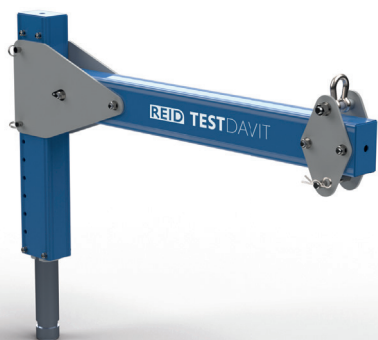
- Suitable for use with 2½" kingpin
- Manual handling compliant
- Secured using qty.4 ⅝" or ¾" anchors [not supplied]

Product Code	Description	Material	Weight [lb]	Compliance
US-SP0500-0500	Socket Pedestal 19¾"	Aluminum	29	ANSI Z359.18-17, OSHA
US-SP0500-0800	Socket Pedestal 31½"	Aluminum	38	ANSI Z359.18-17, OSHA
US-SP0500-1100	Socket Pedestal 43¾"	Aluminum	42	ANSI Z359.18-17, OSHA





## TESTDAVIT



The **REID Test Davit** has been engineered to ensure maximum safety standards can be met where **fixed sockets** are concerned. The Test Davit allows the user to test the strength and stability of fixed sockets up to 2160lbf.m.

Designed to be used with either a **PORTAGANTRY<sup>RAPIDE</sup>** or Staht device.

Loading Required for Testing		
PPE		
Reach*	Service Load [lbf]	Load to apply to Test Davit [lbf]
31 ½"	1350	1080
39 ¾"	1350	1350
47 ¾"	1350	1620
63"	1350	2160
Goods Only		
Reach	Capacity [lb]	Load to apply to Test Davit [lbf]
31 ½"	1320	1330
39 ¾"	1100	1395
47 ¾"	1100	1665
63"	825	1665
78 ¾"	660	1665

For goods only the proof load is equal to the WLL x 125%.  
Test Davit loading = Reach x service load

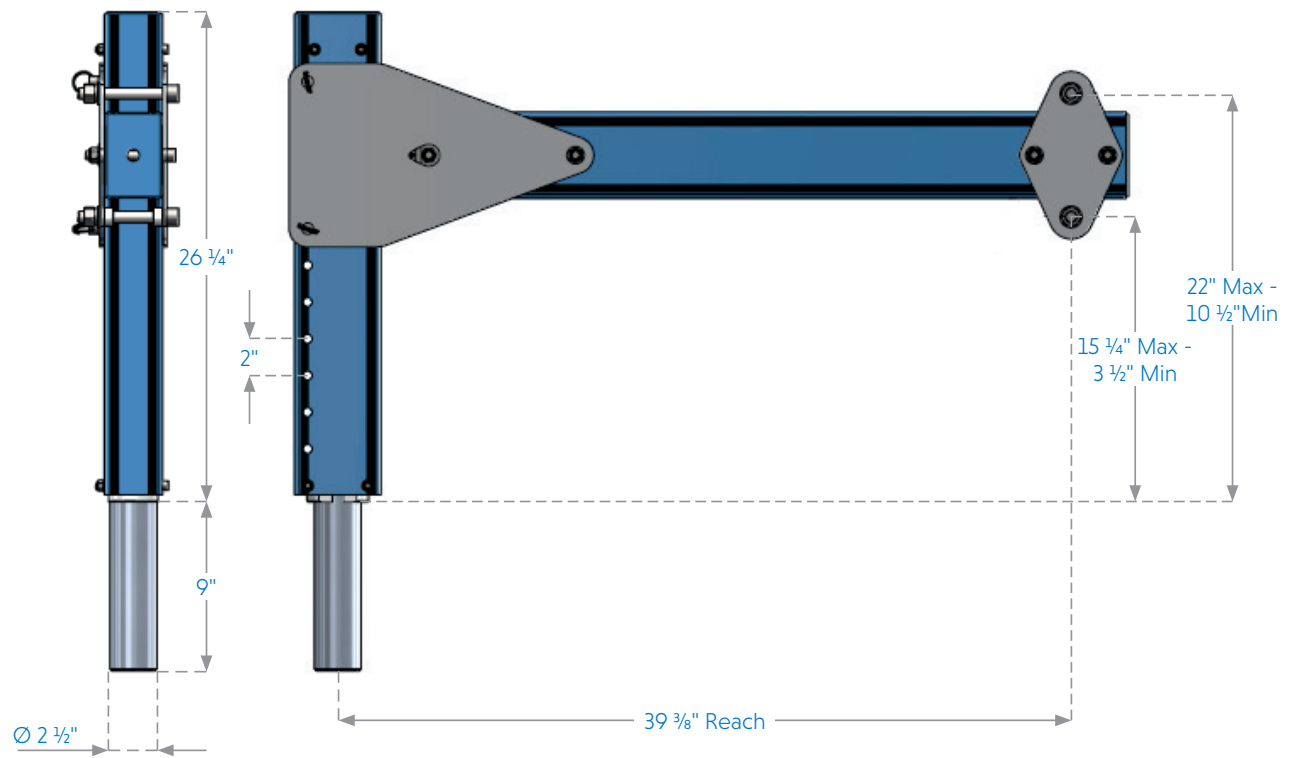
\*Reach relates to the length of the beam of the davit that is used in the lifting operation and **not** the length of the test davit beam.

$$WLL = 300\text{kg [660lb]} \text{ or } 2.94\text{kN [661lbf]} \left( \frac{300 \times 9.81}{1000} \right)$$

Reach = 1600mm or 1.6m [63"]

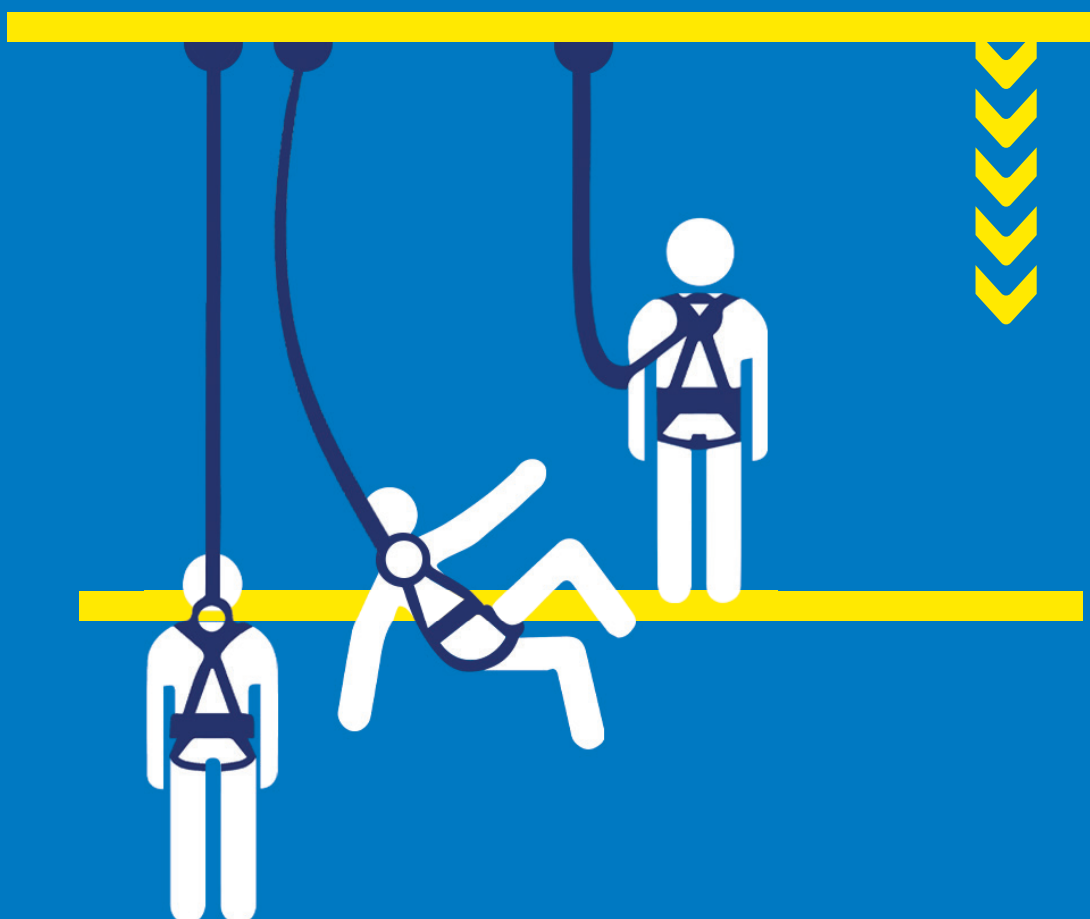
### Test Davit Proof Load

$$(2.94 \times 1600 \times 125\%) = 5.88\text{kN [1322lbf]}$$



# > Technical Guidance

When carrying out working at height and confined space access tasks you must ensure that it is correctly planned and the risks have been considered to provide maximum safety.



## Be Prepared

Before considering work at height, or access in to a confined space, carry out a risk assessment for all of the work activities that will be undertaken, identify the hazards and determine what precautions you will take to minimize the risk. Plan and be prepared for the worst.

Ensure that personnel are competent, fit for the task, have the right equipment and are trained in its correct use. Have a competent person supervise the work.

## Fall Clearance

When considering the suitability of your chosen solution, ensure that you take account of fall clearances required to protect the worker and safely arrest the fall. Where ever possible, fall clearances should be minimized, by ensuring the anchor is above the users head and the user equipment, such as a retractable lifeline, minimizes the free fall distance.

Always allow a safety margin of 3ft beneath the calculated fall arrest distance to take account of stretch or deflection in fall protection system components. Ensure hazards are not present beneath the fall hazard, that could cause injury.

Our products are designed to minimize deflection and therefore reduce the required fall clearance.

## Swing Fall Hazards

When considering the suitability of your chosen

solution, ensure that it can be located above the workers head, with minimal opportunity for a swing fall to occur. Swing falls can cause injury to the worker and can also destabilize portable devices. The greater the angle from the worker to the anchor, the greater the arc, the faster the velocity and the greater the risk.

When selecting your product and determining how you will put it in to use, familiarize yourself with the limitations and restrictions in respect of deviations from the center of the anchor.

When using a gantry, workers must not go outside of the footprint of the A-frames. When using a davit, follow the instructions for maximum deviations, as going beyond approved limits can exponentially increase loads on sockets and bases, leading to potential system failure.

## Rescue Planning

When considering the suitability of your chosen solution, ensure that you have a plan to enable the rescue of a fallen worker or workers should the need arise.

Leaving workers suspended in safety harnesses for prolonged periods of time can cause physical and psychological trauma. By minimizing fall clearance and planning for this eventuality, the difficulties and challenges associated with rescue can be reduced.

REID Lifting offer products and accessories that can be used to assist with rescue when using our gantries and davits. Please contact a

member of our team for more information.

## Installation of Sockets

When installing sockets for davits, it is essential that the substrate or structure to which the socket is being fitted is validated as suitable by a qualified person, such as a structural engineer.

Where installing in to concrete using a chemical resin, the depth of the hole that is drilled in the concrete is dependent upon the type of concrete and the Reach of the davit.

Please refer to our product overview for guidance. [All scenarios should be independently validated before installation. Only trained and competent personnel should carry out socket installations].

Following installation in concrete and after the chemical resin has cured in accordance with manufacturers instructions, the anchors should be proof load tested before the system is put in to first use.

## Limitations of Use

When considering the suitability of your chosen solution, ensure that you fully understand the limitations of use of the equipment. Misuse could lead to serious injury or death.

For more information please read our Assembly & Operation Guides available to view and download on our website [us.reidlifting.com](http://us.reidlifting.com).



## > Contact Us

### **REID Lifting Inc.**

7900 International Drive,  
Suite 300,  
Bloomington,  
MN 55425  
USA

- > +1-888-721-6411
- > [info@reidlifting.com](mailto:info@reidlifting.com)
- > [us.reidlifting.com](http://us.reidlifting.com)

SPB/US/V10/06/2025

All information herein is copyright protected by REID Lifting Ltd. All company and product names are Trade Mark and Trade Name protected and all REID Product IPR is protected under Patents, Patents Pending and/or Design Rights.

 Printed using environment friendly processes and materials.

US.[REIDLIFTING.COM](http://REIDLIFTING.COM)