
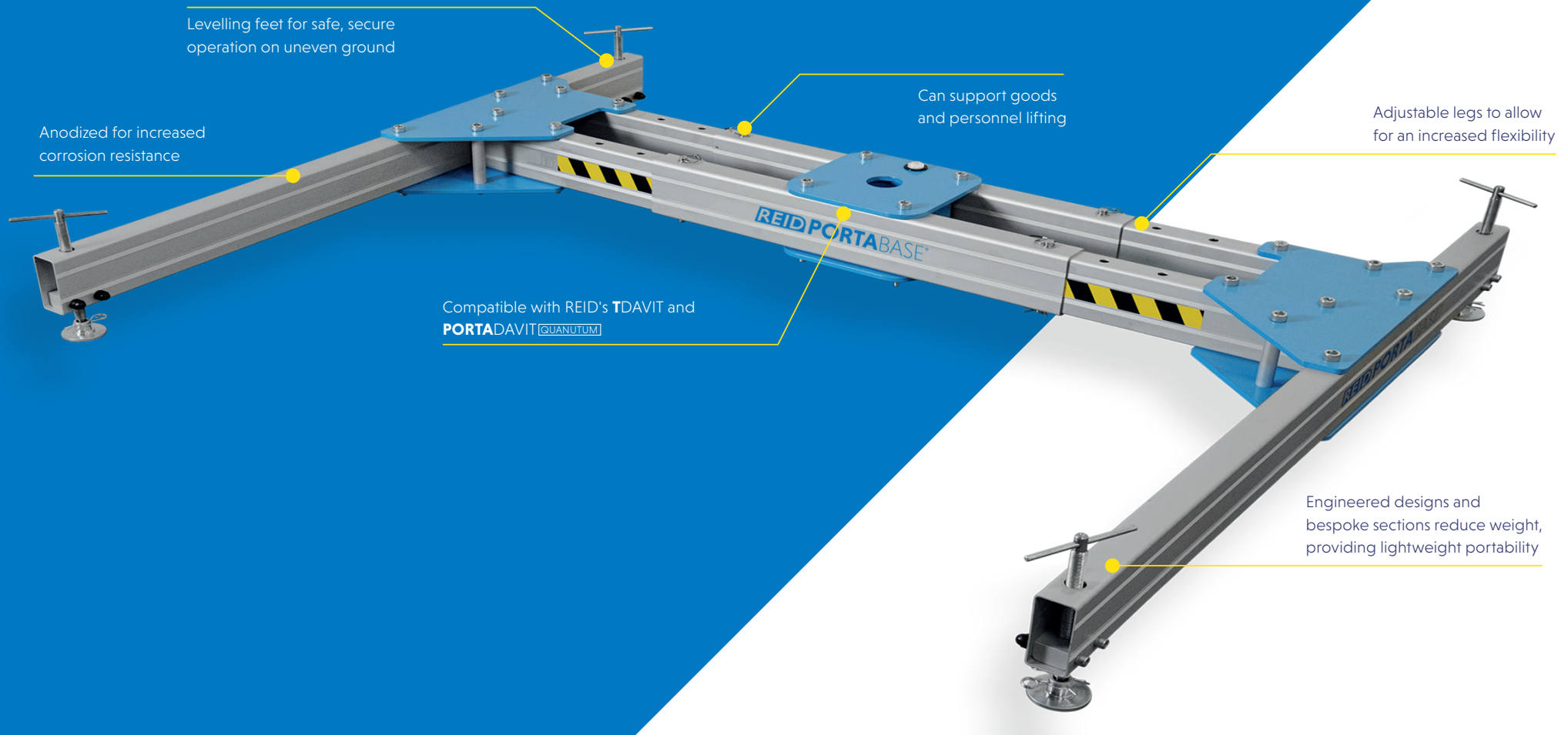


US.[REIDLIFTING.COM](https://www.reidlifting.com)

 **PORTA**BASE[®]
H Base

> PORTABASE[®] H Base



The **PORTABASE H Base** is a three piece, portable system which can be easily broken down for transportation.

Expertly engineered to provide full use and compatibility with the **TDAVIT** and **PORTADAVIT** QUANTUM providing maximum flexibility where the installation or use of a fixed socket is not possible.

The **PORTABASE H Base** enables our Davit products to be used for lifting goods up to 1320lb, as well as providing access and egress for confined space and work at height tasks, including as an anchor point for fall arrest scenarios.

Key features

- › OSHA compliant
- › ANSI Z359.18 compliant for fall protection applications*
- › Can support goods and personnel lifting;
 - › Goods capacity of up to 1320lb
 - › Personnel capacity of up to 660lb
- › Breaks down in to 3 components for ease of transportation
- › Designed for ease of assembly using pins, with no bolted sections or the need for tools
- › Detachable legs for ease of transportation
- › Levelling feet designed to support the system to function correctly on uneven ground
- › Compatible with the use of **TDAVIT** and **PORTADAVIT** QUANTUM
- › Clean, anodized finish for increased corrosion resistance
- › Engineered designs and bespoke sections reduce weight, providing lightweight portability



**1320LB
CAPACITY**



**1-2 PERSON
ASSEMBLY**



**3 MANAGEABLE
COMPONENTS**



**ANSI Z359.18
COMPLIANT**

Features & Performance

H BASE

Accreditations, Certifications & Standards

OSHA Compliant	✓
ANSI Z359.18-17*	✓

Capacity

Maximum Goods Lifting [lb]	1320
Maximum Personnel Lifting [lb]	660
Fall Arrest [Persons]	1
Maximum Reach [inch]	31½

Dimensions

Minimum Base Width [inch]	56¼
Maximum Base Width [inch]	72
Minimum Base Height [inch]	8½
Maximum Base Height [inch]	13
Overall Length [inch]	63

Compatible Products

Porta Davit Quantum [Restricted]	✓
T Davit [Winched]	✓
T Davit [Double Winched]	✓

Standard Features

Levelling Feet	✓
Individual Component Weight < 50lb	✓
No Tools Required	✓

Finishes

Anodized / Powder Coated	✓
316SS Fixings	Optional
Marine Spec	Optional

*Due to the range and complexities of our Davit systems, please refer to the 'Fall Protection Application' section of our Assembly & Operation Guide.

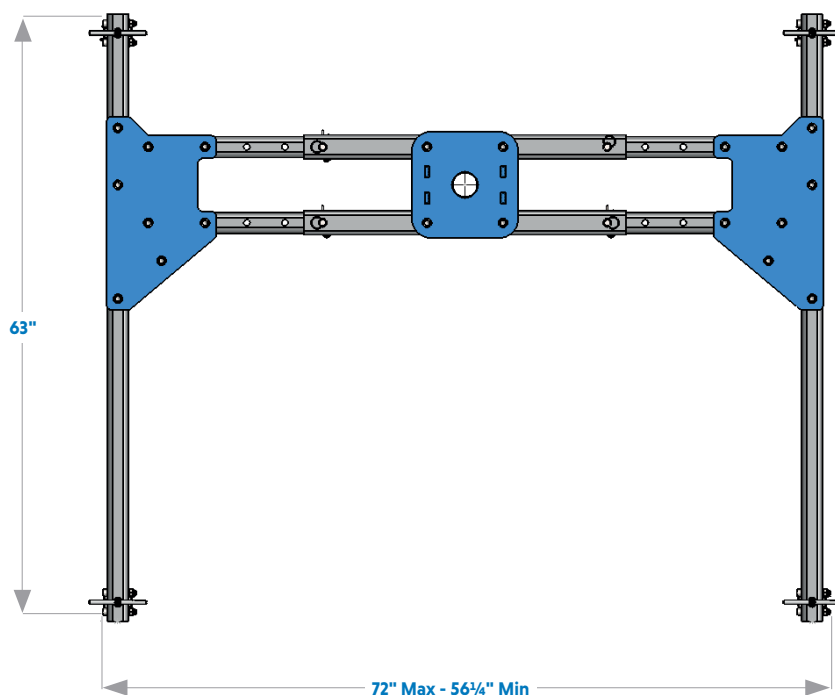
Dimensions in the table are approximate values. For more accurate details please refer to the Dimension Table.

All line items marked with a '✓' come as standard. All line items marked with a 'X' are not available.

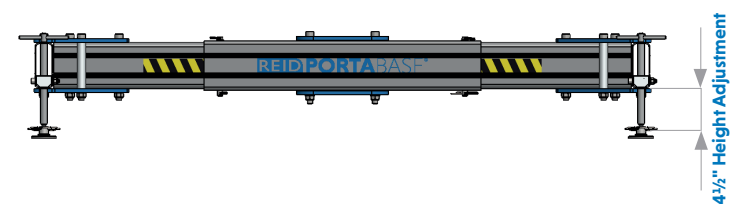
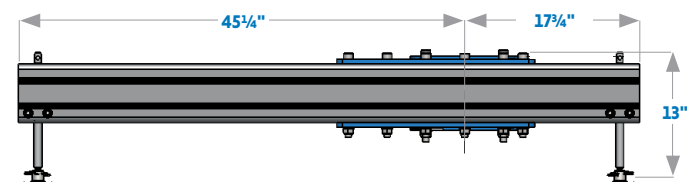
All line items marked with 'optional' are available as an option and may incur additional costs.



PORTABASE® H Base | Dimensions



Product Code	Description
US-PBHB00001	PORTABASE H Base Standard - Max 31½ Reach



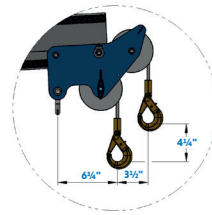
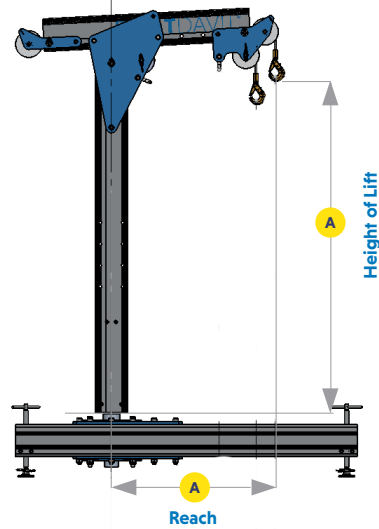
Component	Weight [lb]
Central Hub	41
Leg Assembly [Each]	49.5
Total Weight	140



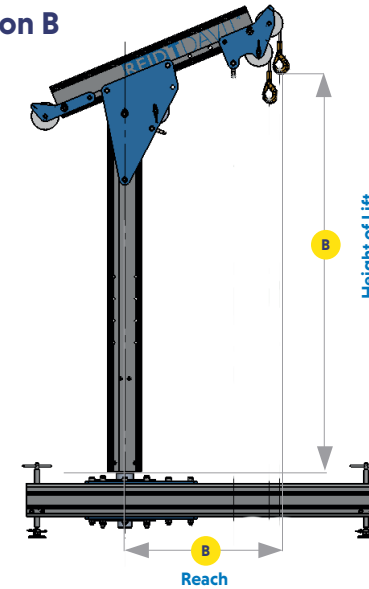


PORTABASE® H Base | TDAVIT® Double Winched

Position A



Position B



PRODUCT CODE	HEIGHT OF LIFT (HOL)		REACH		CAPACITY			DAVIT WEIGHT [LB]
	Position A	Position B	Position A	Position B	Goods [lb]	Personnel [lb]	Fall Arrest	
US-TDDWA3A0	50¾"	60¾"	31½"	29¾"	1320	660	1 Person	75
US-TDDWA4A0	63¾"	73"	31½"	29¾"	1320	660	1 Person	79
US-TDDWA5A0	75½"	85¾"	31½"	29¾"	1320	660	1 Person	86

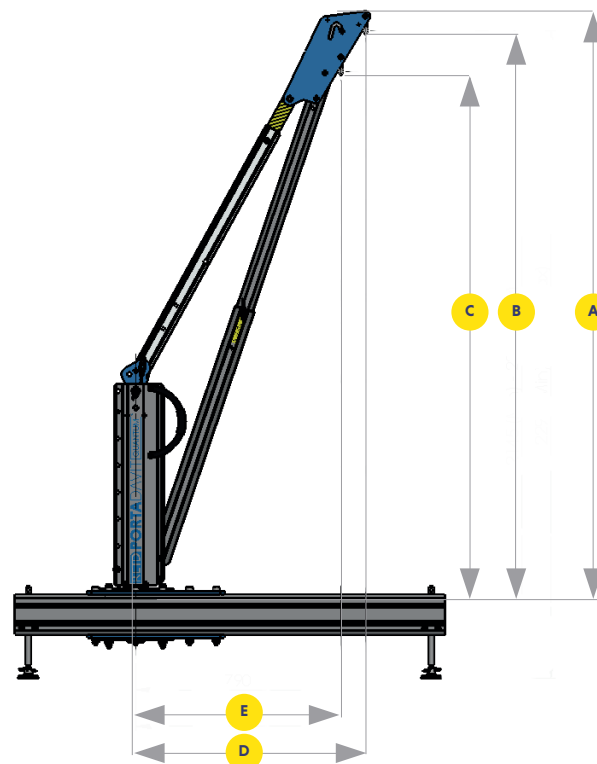
ANSI Z359.18 2017 and OSHA compliant. Contact us for details.





PORTABASE® H Base | PORTADAVIT^{QUANTUM}® Reduced Reach

- A** Overall height
- B** Height to outer shackle
- C** Height to inner shackle
- D** Reach to outer shackle
- E** Reach to inner shackle



DIMENSIONS

PRODUCT CODE	SYSTEM WEIGHT [lb]	GOODS CAPACITY [lb]	PERSONNEL CAPACITY [lb]	FALL ARREST	REACH ADJUSTMENT POINTS	A	B	C	D*	E*
US-PDQR	50	1320	660	1 Person	1	84½"	81¾"	76"	31½"	27¾"

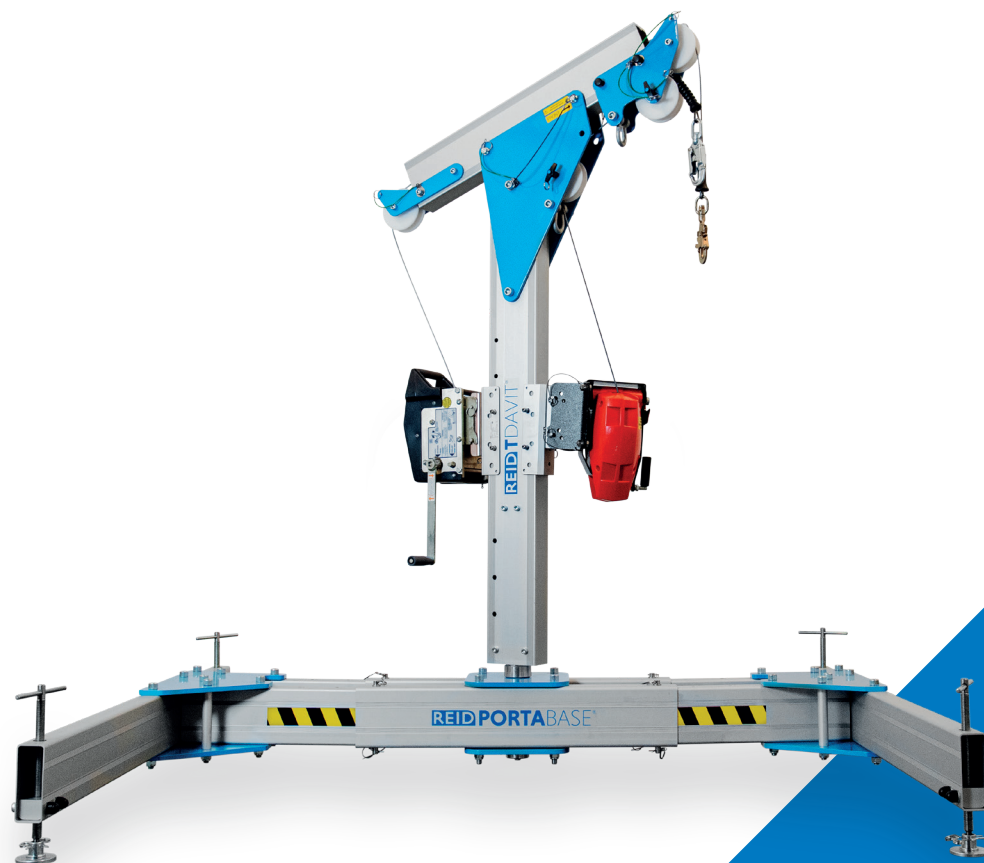
*Radii achieved at ≈ 75% Capacity

OSHA compliant. Contact us for details.





PORTABASE® H Base | Compatible Systems



TDAVIT®



PORTADAVIT QUANTUM®





Contact Us

REID Lifting Inc, USA

7900 International Drive
Suite 300
Bloomington
MN 55425

- +1-(888)-721-6411
- info@reidlifting.com
- us.reidlifting.com

P8H/DS/US/V3/09/2021

All information herein is copyright protected by REID Lifting Ltd. All company and product names are Trade Mark and Trade Name protected and all REID Product IPR is protected under Patents, Patents Pending and/or Design Rights.



Printed using environment friendly processes and materials.

REID Lifting Inc

7900 International Drive,
Suite 300,
Bloomington,
MN 55425

- +1-(888)-721-6411
- info@reidlifting.com
- us.reidlifting.com