

PLUSWINCH

➤ Assembly & Operation Guide for brackets & mounting

Contents

PORTA GENTRY <small>[RAPIDE]</small> 500	4
PORTA GENTRY <small>[RAPIDE]</small> 1000	6
PORTA GENTRY* Small & Medium	8
Fitting device into Bracket	10
PORTA GENTRY*	12
T DAVIT*	14
PORTA DAVIT <small>[QUANTUM]</small> Column	16
PORTA DAVIT <small>[QUANTUM]</small> Backstay	18
PORTA DAVIT* 500	20
PORTX * DAVIT	22

Lightweight. Portable. **Safe.**

Please read the following instructions and guidance notes carefully. These have been designed to aid users in carrying out the correct assembly of the bracket for each of our compatible lifting systems. Systems compatible with this product are:

- **PORTA**GANTRY [RAPIDE]
- **PORTA**GANTRY*
- **T**DAVIT*
- **PORTA**DAVIT [QUANTUM]
- **PORTA**DAVIT*
- **PORTX*** DAVIT

General Specification

- Maximum rated capacity for goods lifting - 500kg
- Ensure the rating of the Winch is always checked before use
- For use with REID lifting products only

Standards

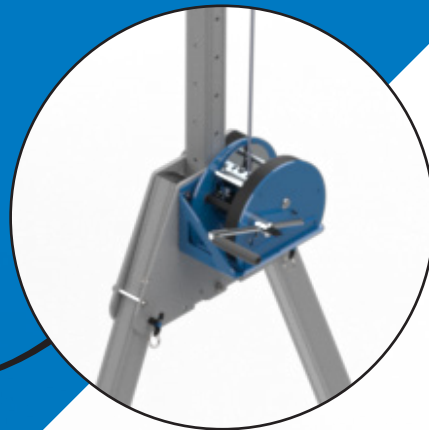
- EN13157:2004+A1:2009

For further information please refer to the technical data sheet for this product.

➤ Assembly Instructions: PORTAGANTRY[®] RAPIDE[®] 500

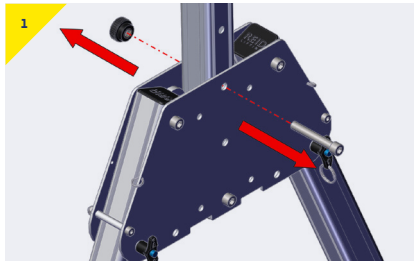
The following instructions detail the assembly of the PlusWinch bracket [RAWB010220] for the PORTAGANTRY[®] RAPIDE[®] 500kg.

Appropriate PPE should be worn: ➤ Gloves ➤ Protective Footwear

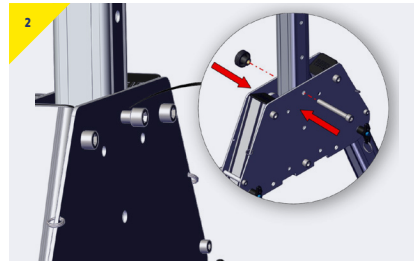


PlusWinch Bracket - [RAWB010220]

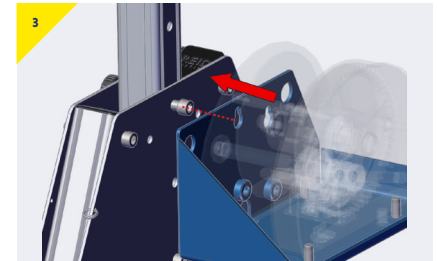
Assembling the PlusWinch Bracket on PORTAGANTRY[®] 500



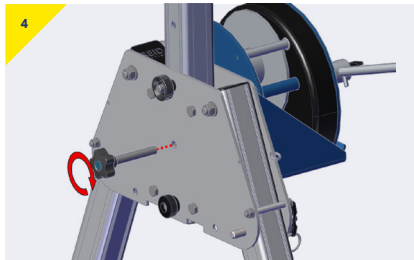
- Remove the existing top bolt.



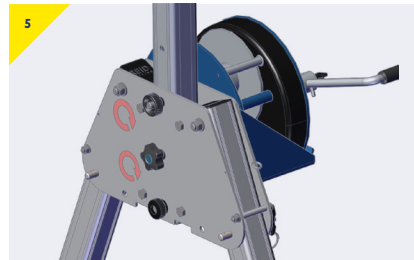
- Insert the new, longer bolt leaving it loose so that the head sits proud of the plate.



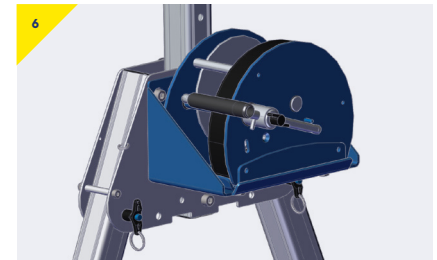
- Hook the bracket over the bolt head.



- Straighten the winch and insert the lower pin.



- Fully tighten both the top bolt and bottom pin. The winch bracket should sit flush with the plate.

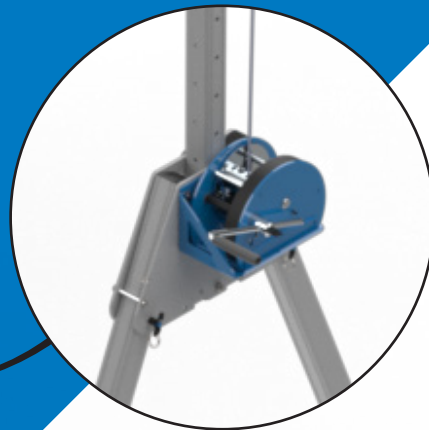


- You may now route the cable as normal and use the winch.

➤ Assembly Instructions: PORTAGANTRY[®] RAPIDE[®] 1000

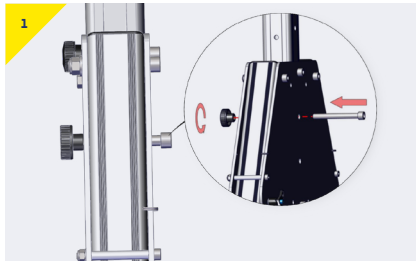
The following instructions detail the assembly of the PlusWinch bracket [RAWB010220] for the PORTAGANTRY[®] RAPIDE[®] 1000kg.

Appropriate PPE should be worn: ➤ Gloves ➤ Protective Footwear

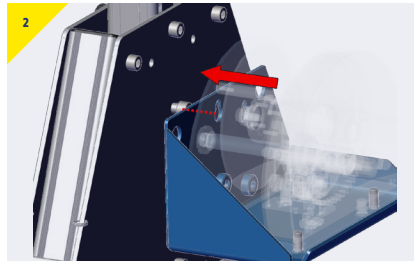


PlusWinch Bracket - [RAWB010220]

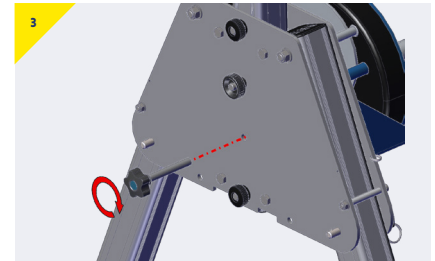
Assembling the **PlusWinch Bracket** on **PORTAGANTRY[®] RAPIDE[®] 1000**



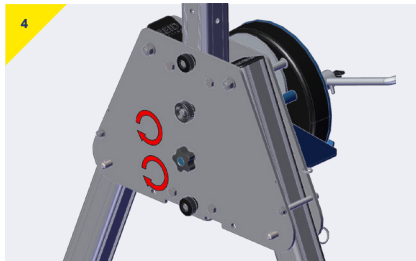
- Insert the new, longer bolt leaving it loose so that the head sits proud of the plate.



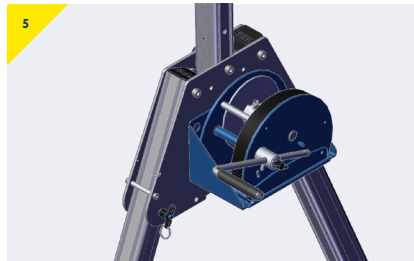
- Hook the bracket over the bolt head.



- Straighten the winch and insert the lower pin.



- Fully tighten both the top bolt and bottom pin. The winch bracket should sit flush with the plate.



- You may now route the cable as normal and use the winch.

➤ Assembly Instructions: PORTAGANTRY® S & M

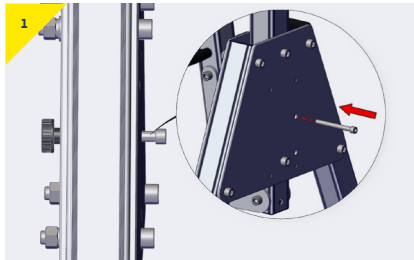
The following instructions detail the assembly of the PlusWinch bracket [RAWB010225] for the **PORTAGANTRY** Small and Medium frame sizes.

Appropriate PPE should be worn: ➤ **Gloves** ➤ **Protective Footwear**

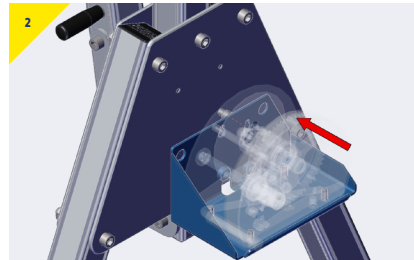


PlusWinch Bracket - [RAWB010225]

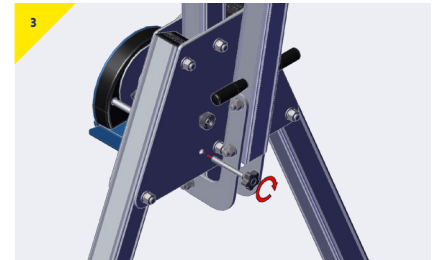
Assembling the **PlusWinch Bracket** onto a small or medium **PORTA**GANTRY*



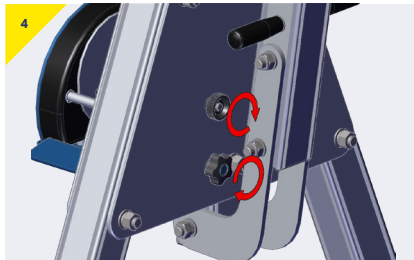
- Insert the bolt into the top hole and secure using the knurled knob, leaving it loose so that the head sits proud of the plate.



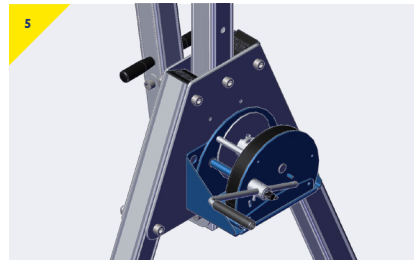
- Hook the bracket over the bolt head.



- Straighten the winch and insert the lower pin.



- Fully tighten both the top bolt and bottom pin. The winch bracket should sit flush with the plate.

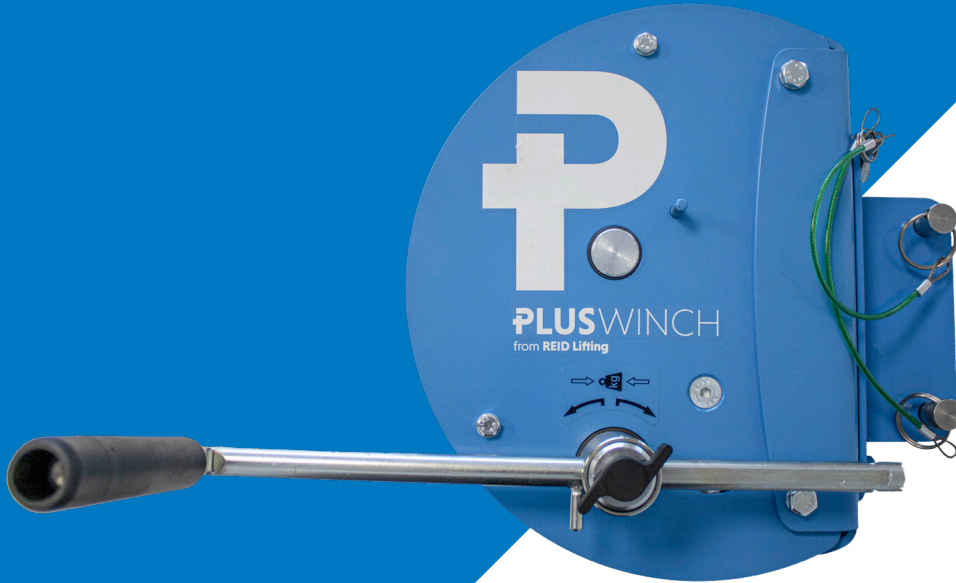


- You may now route the cable as normal and use the winch.

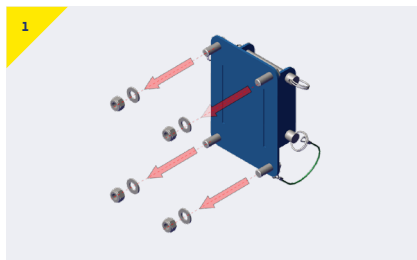
➤ Assembly Instructions: Fitting the Device

The following instructions detail the assembly of the PlusWinch device into the universal bracket.

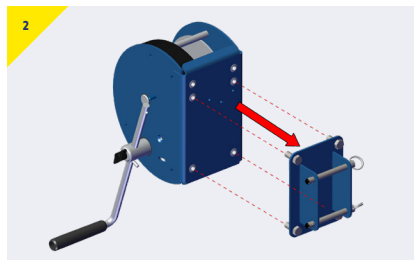
Appropriate PPE should be worn: ➤ Gloves ➤ Protective Footwear



Assembling the **PlusWinch** onto the connecting plate.



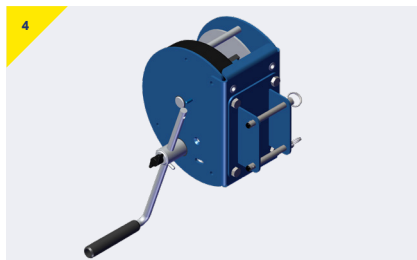
- Remove the washers and nyloc nuts from the bracket.



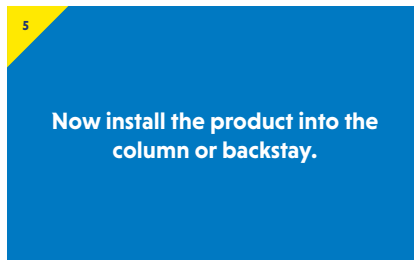
- Present the device to the bracket.



- Adjust the position by tightening the hex bolts.



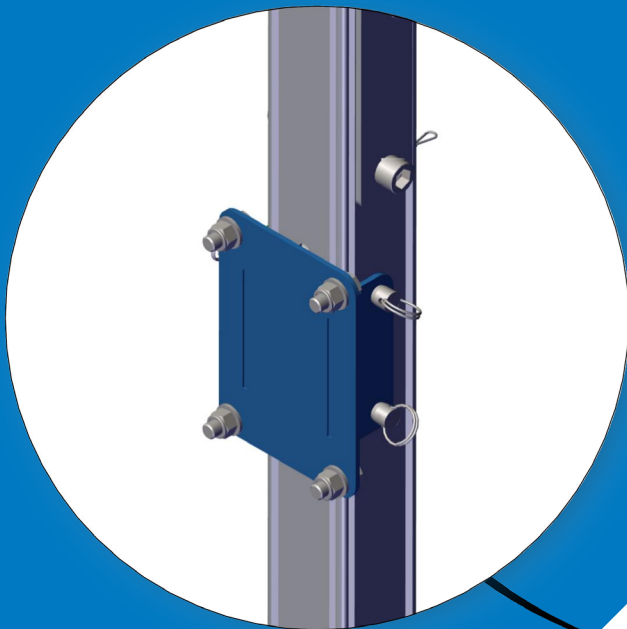
- The device is now ready to use.



➤ Assembly Instructions: PORTAGANTRY®

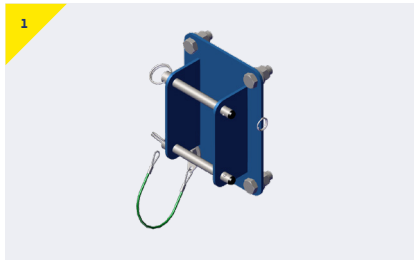
The following instructions detail the assembly of the PlusWinch bracket [RAWB010208] for the **PORTAGANTRY**®.

Appropriate PPE should be worn: ➤ **Gloves** ➤ **Protective Footwear**

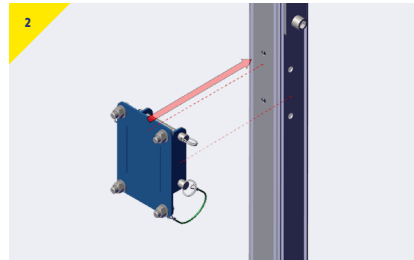


PlusWinch Bracket - [RAWB010208]

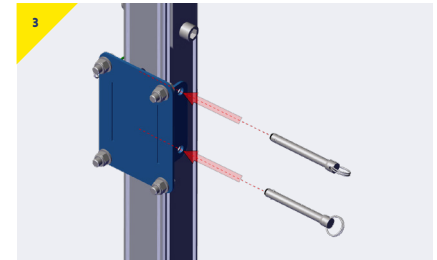
Assembling the **PlusWinch Bracket** onto a **PORTAGANTRY®**



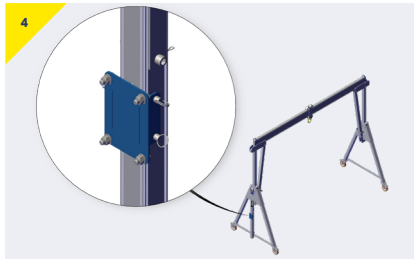
- The bracket comes with the pins supplied, as shown above.



- Remove the pins and present the bracket to the winch column, aligned to the holes as shown.



- Insert both pins to ensure the bracket is securely attached.

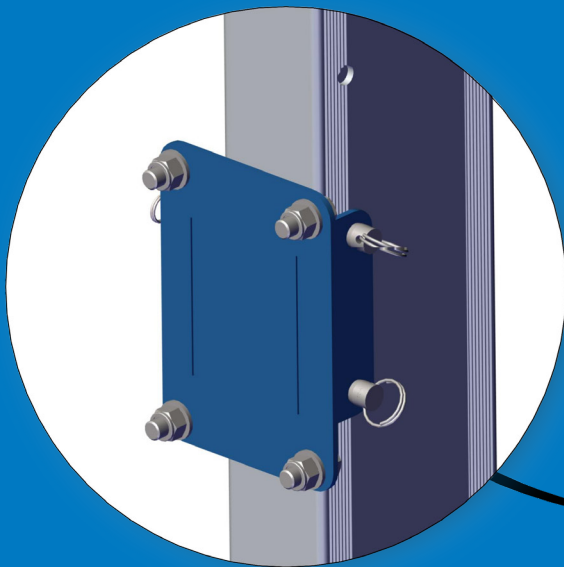


- The bracket is secured and ready for the device to be attached.

➤ Assembly Instructions: TDAVIT®

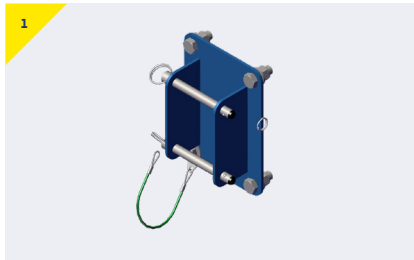
The following instructions detail the assembly of the PlusWinch bracket [RAWB010200] for the TDAVIT®.

Appropriate PPE should be worn: ➤ Gloves ➤ Protective Footwear

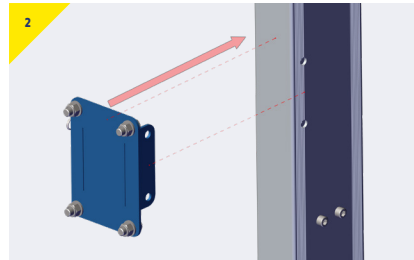


PlusWinch Bracket - [RAWB010200]

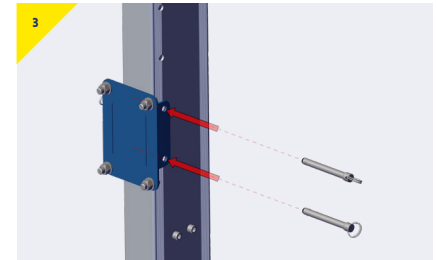
Assembling the **PlusWinch Bracket** onto a **TDAVIT***



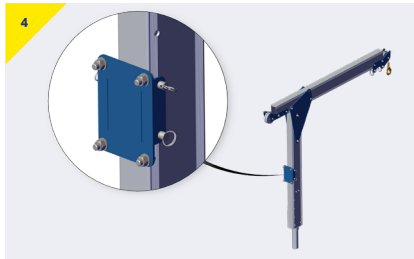
- The bracket comes with the pins supplied, as shown above.



- Remove the pins and present the bracket to the column, aligned to the holes as shown.



- Insert both pins to ensure the bracket is securely attached.

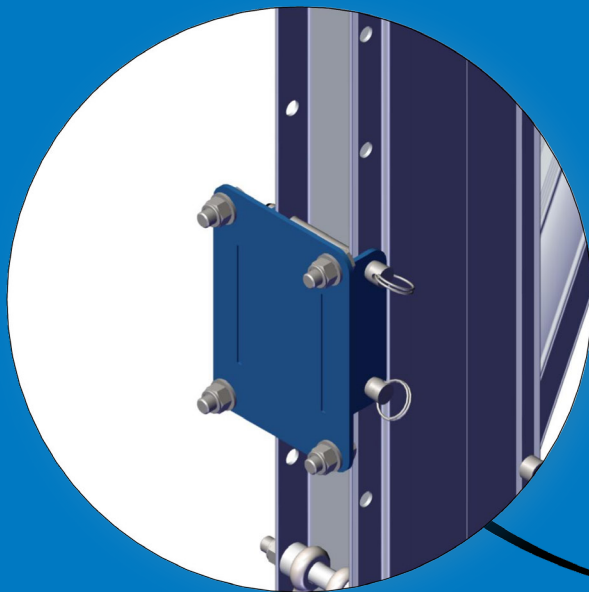


- The bracket is secured and ready for the device to be attached.

➤ Assembly Instructions: PORTA DAVIT QUANTUM® Column.

The following instructions detail the assembly of the PlusWinch bracket [RAWB010200] for the PORTA DAVIT QUANTUM® column.

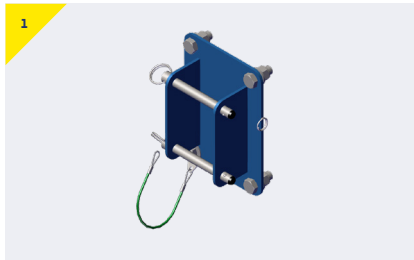
Warning: For this configuration a sheave bracket column is required.



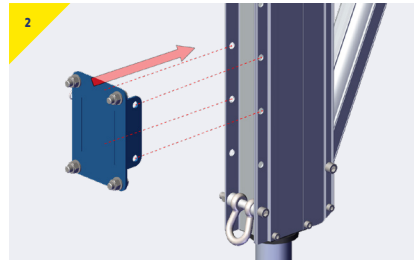
Appropriate PPE should be worn: ➤ Gloves ➤ Protective Footwear

PlusWinch Bracket - [RAWB010200]

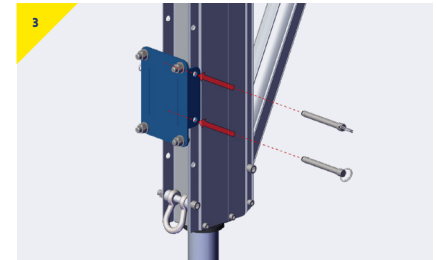
Assembling the **PlusWinch Bracket** onto a **PORTA DAVIT [QUANTUM]** column.



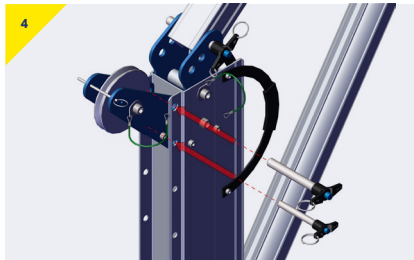
- > The bracket comes with the pins supplied, as shown above.



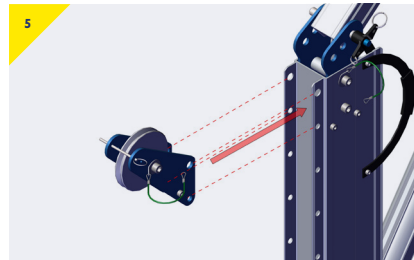
- > Remove the pins and present the bracket to the column, aligned to the holes as shown.



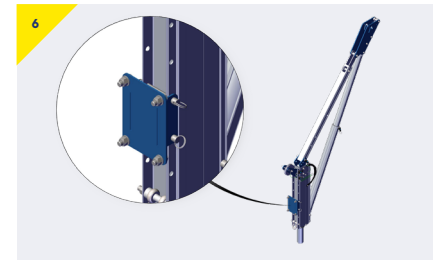
- > Insert both pins to ensure the bracket is securely attached.



- > Present the sheave bracket* to the top of the column, aligning with the top holes as shown.



- > Secure using the pins provided.



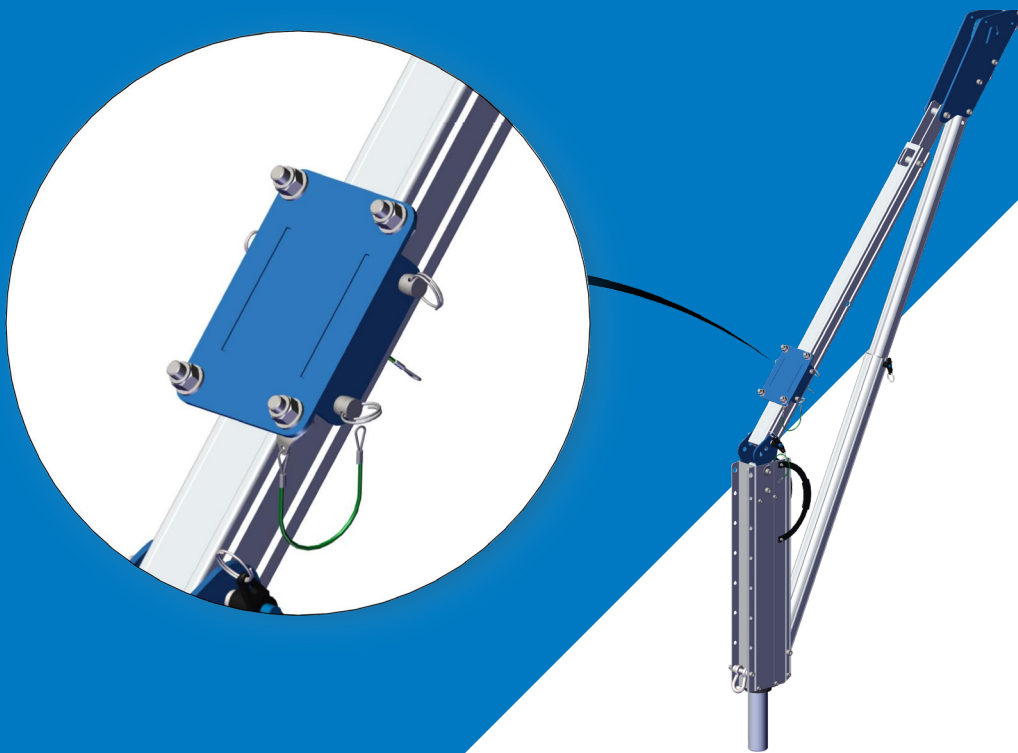
- > The bracket is secured and ready for the device to be attached.

*RAW000095 - Sheave bracket PDQ Column
Medium Sheave (4-7mm).

➤ Assembly Instructions: PORTA^{DAVIT} ^{QUANTUM} Backstay.

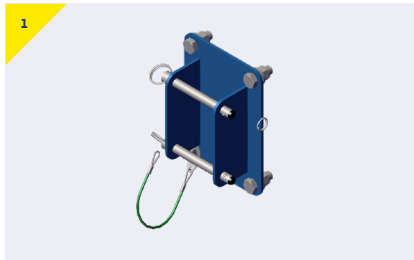
The following instructions detail the assembly of the PlusWinch bracket [RAWB010206] for the PORTA^{DAVIT} ^{QUANTUM} Backstay.

Appropriate PPE should be worn: ➤ Gloves ➤ Protective Footwear

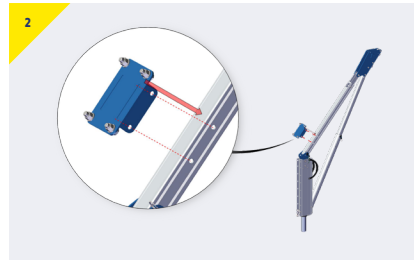


PlusWinch Bracket - [RAWB010206]

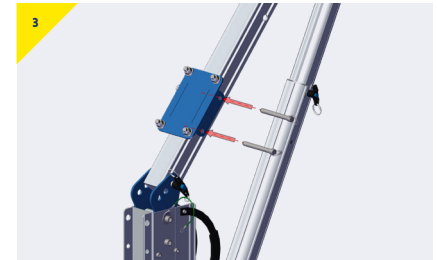
Assembling the **PlusWinch Bracket** onto a **PORTA DAVIT [QUANTUM]** Backstay.



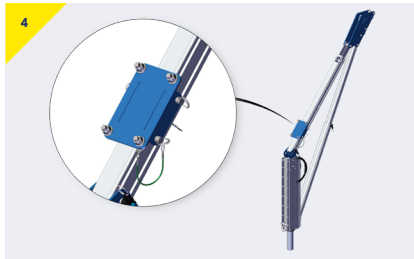
- The bracket comes with the pins supplied, as shown above.



- Remove the pins and present the bracket to the backstay, aligned to the holes as shown.



- Insert both pins to ensure the bracket is securely attached.

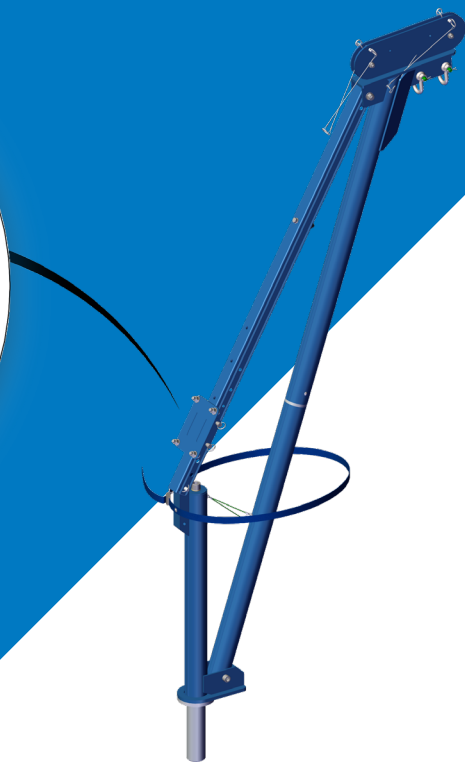
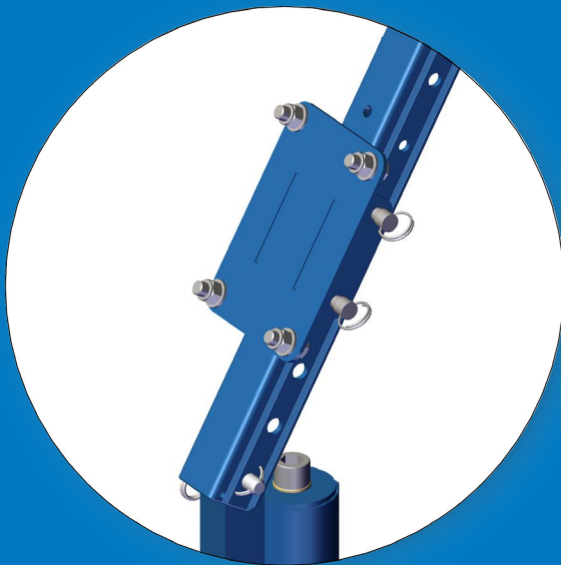


- The bracket is secured and ready for the device to be attached.

➤ Assembly Instructions: PORTA^{DAVIT} 500.

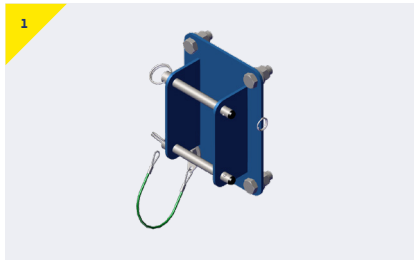
The following instructions detail the assembly of the PlusWinch bracket [RAWB010203] for the **PORTA^{DAVIT}** 500.

Appropriate PPE should be worn: ➤ **Gloves** ➤ **Protective Footwear**

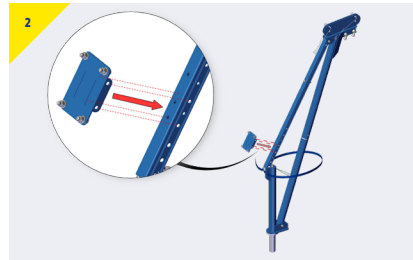


PlusWinch Bracket - [RAWB010203]

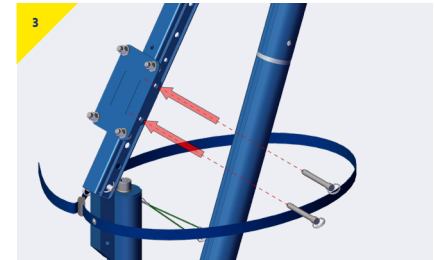
Assembling the **PlusWinch Bracket** onto a **PORTA**DAVIT 500.



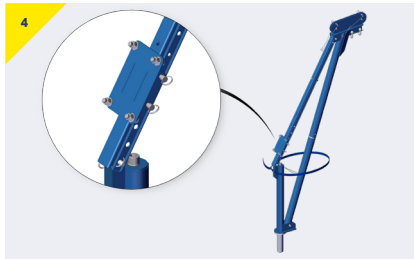
- The bracket comes with the pins supplied, as shown above.



- Remove the pins and present the bracket to the backstay, aligned to the holes as shown.



- Insert both pins to ensure the bracket is securely attached.

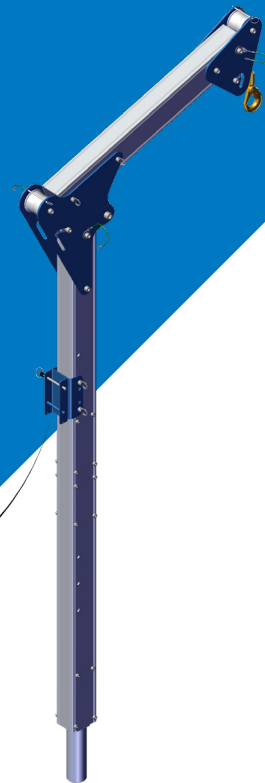
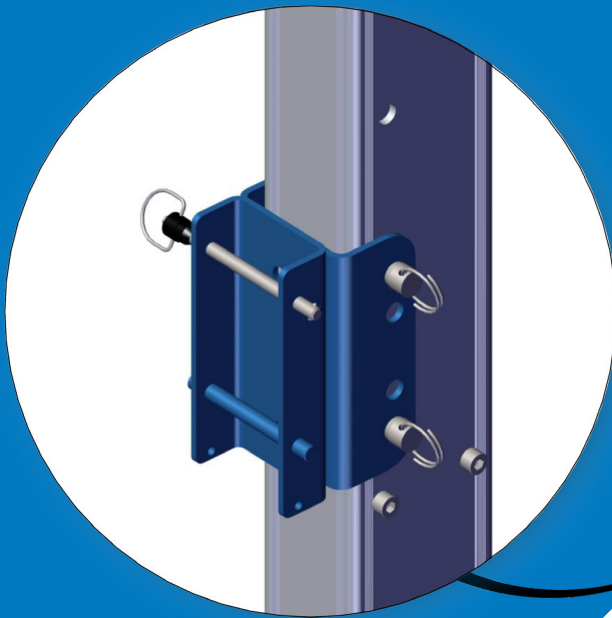


- The bracket is secured and ready for the device to be attached.

➤ Assembly Instructions: PORTX® DAVIT

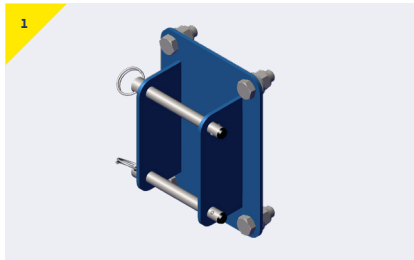
The following instructions detail the assembly of the PlusWinch bracket [RAWB010200] for the PORTX® DAVIT.

Appropriate PPE should be worn: ➤ Gloves ➤ Protective Footwear

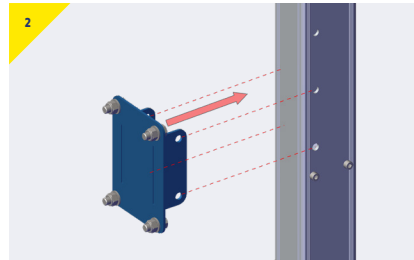


PlusWinch Bracket - [RAWB010200]

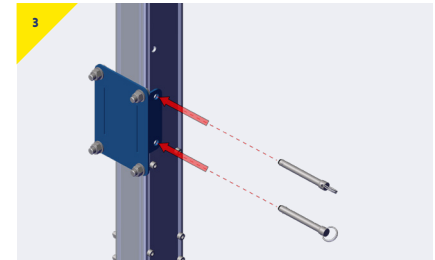
Assembling the **PlusWinch Bracket** onto a **PORTX® DAVIT** with a Single Winch.



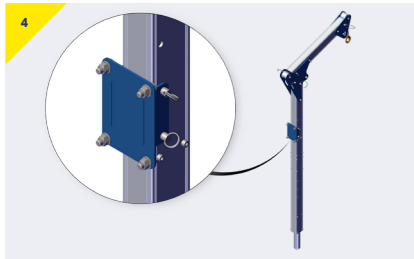
- The bracket comes with the pins supplied, as shown above.



- Remove the pins and present the bracket to the column, aligned to the holes as shown.



- Insert both pins to ensure the bracket is securely attached.



- The bracket is secured and ready for the device to be attached.

Contact Us

Head Office, UK

Unit 1 Wyeview
Newhouse Farm Industrial Estate
Chepstow
Monmouthshire
NP16 6UD
United Kingdom

- +44 (0)1291 620 796
- enquiries@reidlifting.com
- www.reidlifting.com

All information herein is copyright protected by REID Lifting Ltd. All company and product names are Trade Mark and Trade Name protected and all REID Lifting Ltd. Product IPR is protected under Patents, Patents Pending and/or Design Rights.



Printed using environment friendly processes and materials.