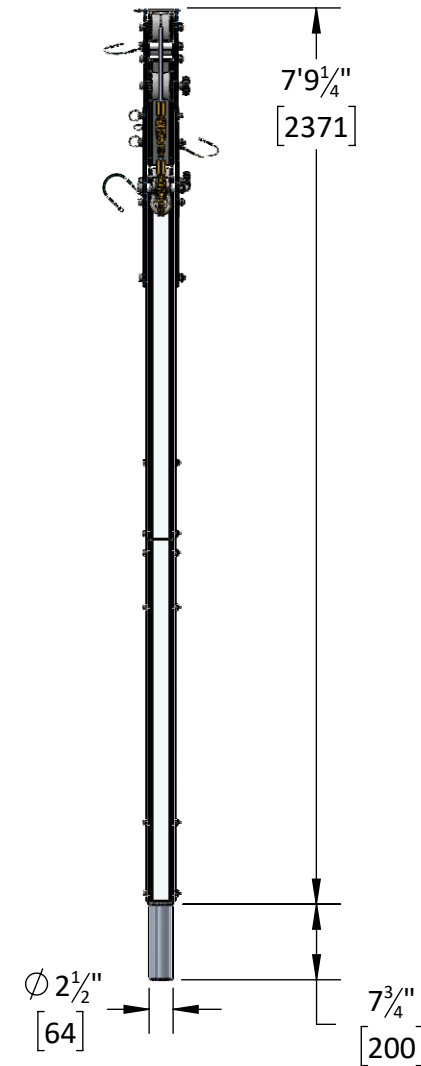
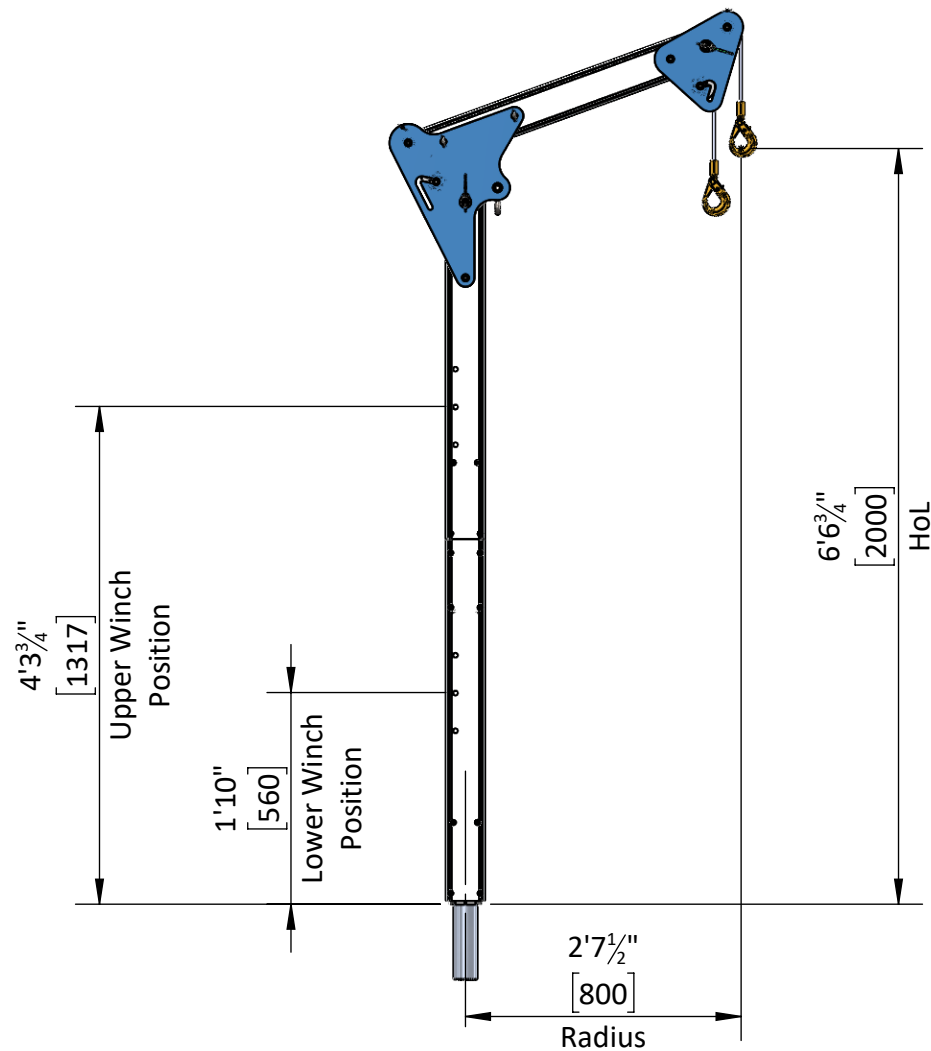




TECHNICAL DATASHEETS

PORTX[®] DAVIT

US.[REIDLIFTING.COM](https://www.us.reidlifting.com)



Reid Lifting Inc. 7900 International Drive, Suite 300.
Bloomington. MN55425. USA
Tel: +1-888-721-6411

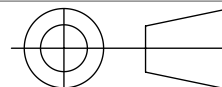
Reid Lifting Limited. Unit 1, Wyeview
Newhouse Farm Ind.Est. Chepstow. Monmouthshire.
NP16 6UD Tel: +44 1291 620796



www.us.reidlifting.com
info@reidlifting.com

	NAME	DATE
DRAWN	MH	04/08/2023
APPV'D	AB	03/01/2024

Approved



TITLE:

General Arrangement of REID PortX
Davit $31\frac{1}{2}"$ Radius HOL $6' 6\frac{3}{4}"$ WLL
660lb

ALL COPYRIGHT AND DESIGN RIGHT SUBSISTING IN THIS DOCUMENT IS THE PROPERTY OF REID LIFTING LIMITED AND MAY NOT BE REPRODUCED WITHOUT REID LIFTING'S CONSENT. THIS DOCUMENT AND THE INFORMATION CONTAINED WITHIN IT IS CONFIDENTIAL AND MAY NOT BE DISCLOSED TO ANY THIRD PARTY NOR USED FOR ANY UNAUTHORISED PURPOSE WITHOUT REID LIFTING'S CONSENT

REVISION **01** DO NOT SCALE DRAWING 1:20 SHEET 1 OF 2 A

General Specification

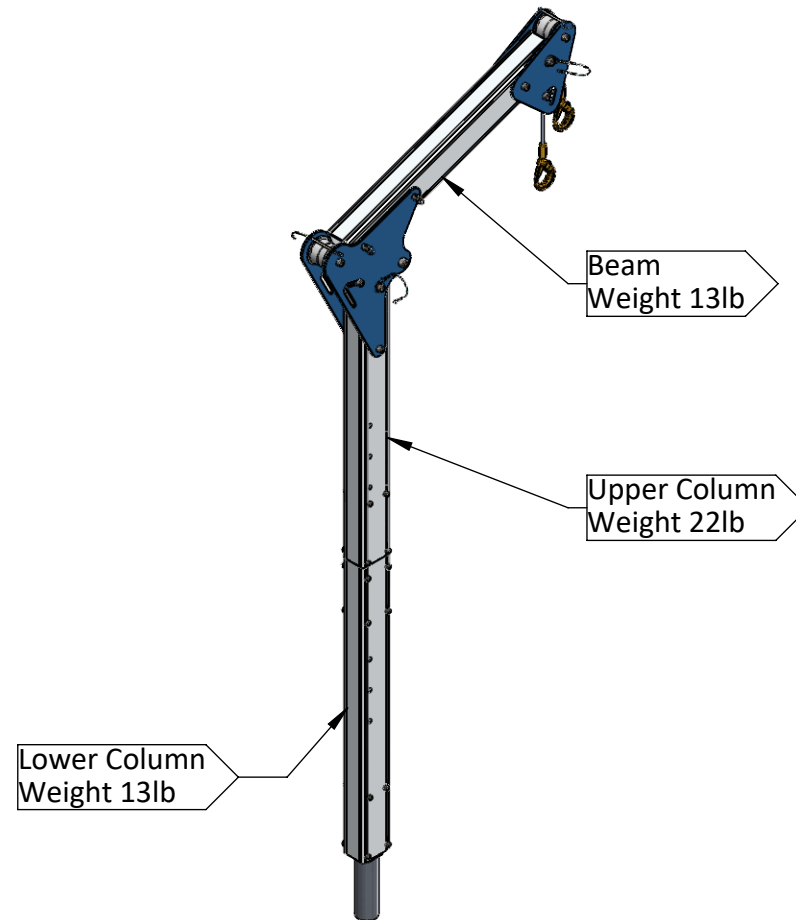
- Maximum rated capacity for goods lifting - 660lb
- Maximum rated capacity for personnel lifting - 330lb
- Beam deflection at maximum rated capacity of 660lb - 3"
- Assembled T-Davit weight - 48lb
- For further details and assembly information refer to Operations and Maintenance Manual for PortX Davit Product. (available at us.reidlifting.com)

Fall Protection Standards

- Complies with the requirements of OSHA 1910 sub part I (.140) & 1926 sub part M
- Ultimate load for OSHA calculations - 3140lb.(Safety factor must be applied)
- Meets the requirements for SPRAT & IRATA anchor points

Materials & Finishes

- Column and beam - 6082-T6 marine grade alloy. Anodized
- Plates - 6082-T6 Aluminium Alloy Powdered Coated
- Sheaves (where applicable) - Acetal Copolymer
- Fixings - Steel. Grade 12.9 Bright Zinc Plated



Reid Lifting Inc. 7900 International Drive, Suite 300.
Bloomington. MN55425. USA
Tel: +1-888-721-6411

www.us.reidlifting.com
info@reidlifting.com

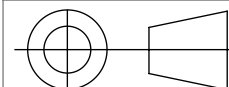
Reid Lifting Limited. Unit 1, Wyeview
Newhouse Farm Ind.Est. Chepstow.
Monmouthshire. NP16 6UD
Tel: +44 1291 620796



	NAME	DATE
DRAWN	MH	04/08/2023
APPV'D	AB	03/01/2024

TITLE:

General Arrangement of REID
PortX Davit 31½" Radius HOL 6'
6¾" WLL 660lb

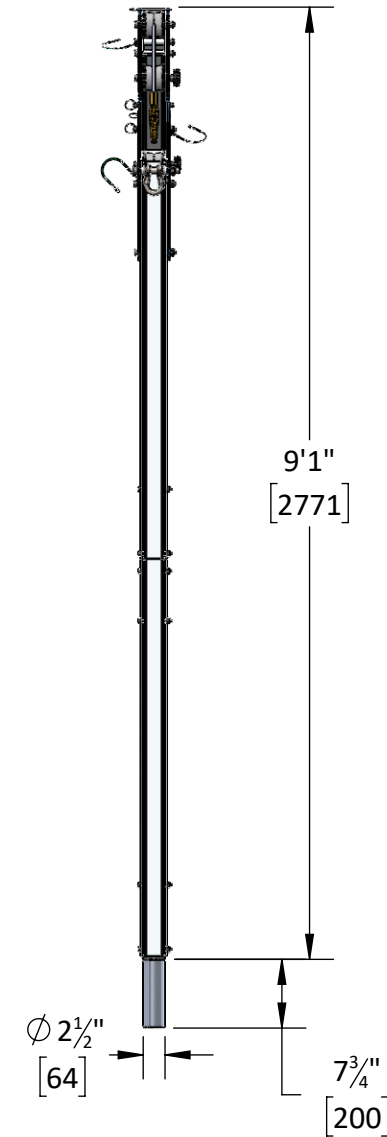
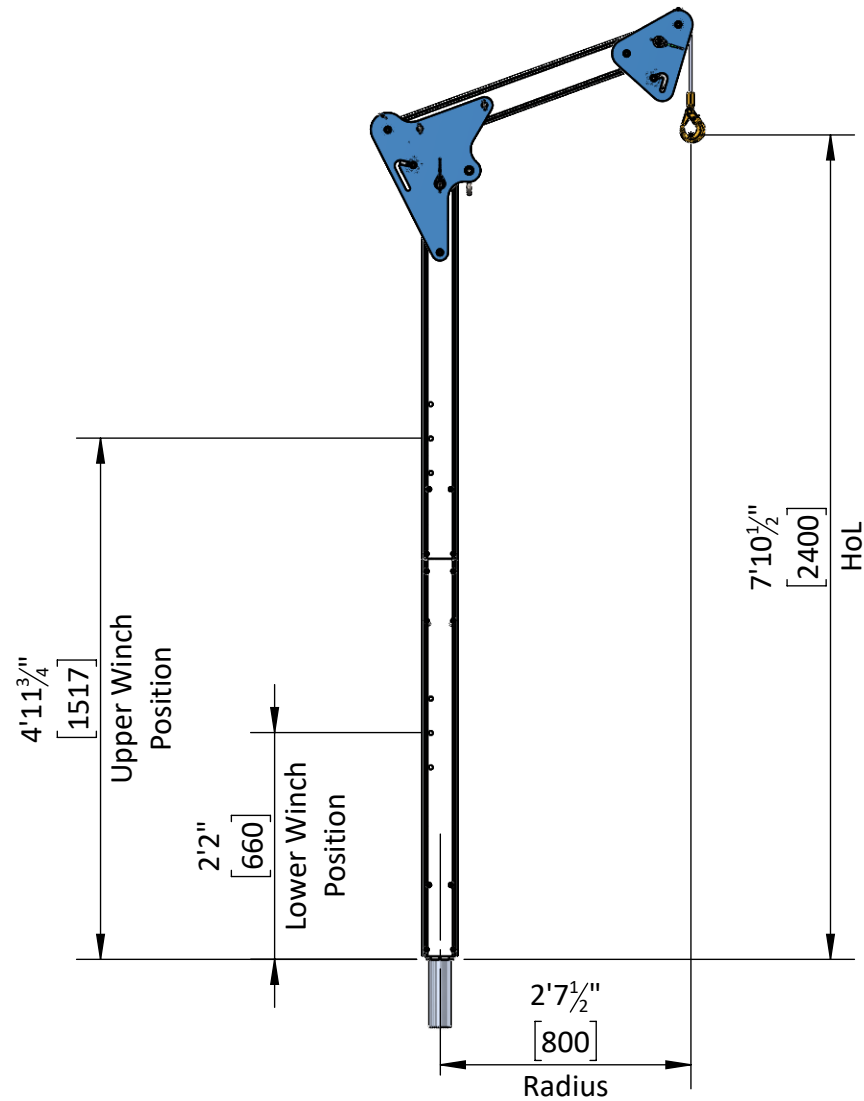


ALL COPYRIGHT AND DESIGN RIGHT SUBSISTING IN THIS DOCUMENT IS THE PROPERTY OF REID LIFTING LIMITED AND MAY NOT BE REPRODUCED WITHOUT REID LIFTING'S CONSENT. THIS DOCUMENT AND THE INFORMATION CONTAINED WITHIN IT IS CONFIDENTIAL AND MAY NOT BE DISCLOSED TO ANY THIRD PARTY NOR USED FOR ANY UNAUTHORISED PURPOSE WITHOUT REID LIFTING'S CONSENT

REVISION	01	DO NOT SCALE DRAWING	1:20	SHEET 2 OF 2	A
----------	----	----------------------	------	--------------	---

PART No.

US-PTXDR800-24



Reid Lifting Inc. 7900 International Drive, Suite 300.
Bloomington. MN55425. USA
Tel: +1-888-721-6411

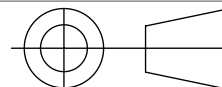
Reid Lifting Limited. Unit 1, Wyeview
Newhouse Farm Ind.Est. Chepstow. Monmouthshire.
NP16 6UD Tel: +44 1291 620796



www.us.reidlifting.com
info@reidlifting.com

	NAME	DATE
DRAWN	MH	04/08/2023
APPV'D	AB	03/01/2024

Approved



TITLE:

General Arrangement of REID PortX
Davit $31\frac{1}{2}"$ Radius HOL $7' 10\frac{1}{2}"$ WLL
660lb

ALL COPYRIGHT AND DESIGN RIGHT SUBSISTING IN THIS DOCUMENT IS THE PROPERTY OF REID LIFTING LIMITED AND MAY NOT BE REPRODUCED WITHOUT REID LIFTING'S CONSENT. THIS DOCUMENT AND THE INFORMATION CONTAINED WITHIN IT IS CONFIDENTIAL AND MAY NOT BE DISCLOSED TO ANY THIRD PARTY NOR USED FOR ANY UNAUTHORISED PURPOSE WITHOUT REID LIFTING'S CONSENT

REVISION **01** DO NOT SCALE DRAWING 1:22 SHEET 1 OF 2 A

General Specification

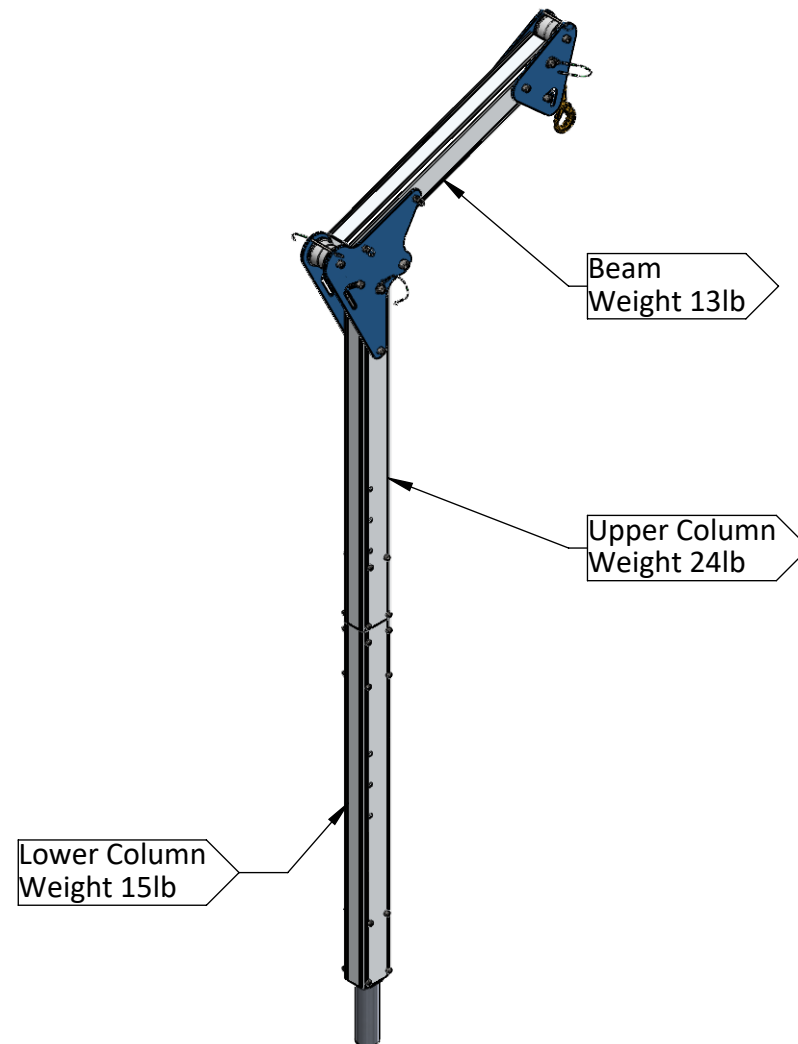
- Maximum rated capacity for goods lifting - 660lb
- Maximum rated capacity for personnel lifting - 330lb
- Beam deflection at maximum rated capacity of 660lb - 3"
- Assembled T-Davit weight - 52lb
- For further details and assembly information refer to Operations and Maintenance Manual for PortX Davit Product. (available at us.reidlifting.com)

Fall Protection Standards

- Complies with the requirements of OSHA 1910 sub part I (.140) & 1926 sub part M
- Ultimate load for OSHA calculations - 3140lb.(Safety factor must be applied)
- Meets the requirements for SPRAT & IRATA anchor points

Materials & Finishes

- Column and beam - 6082-T6 marine grade alloy. Anodized
- Plates - 6082-T6 Aluminium Alloy Powdered Coated
- Sheaves (where applicable) - Acetal Copolymer
- Fixings - Steel. Grade 12.9 Bright Zinc Plated



Reid Lifting Inc. 7900 International Drive, Suite 300.
Bloomington. MN55425. USA
Tel: +1-888-721-6411

www.us.reidlifting.com
info@reidlifting.com

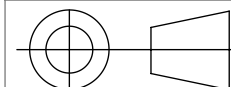
Reid Lifting Limited. Unit 1, Wyeview
Newhouse Farm Ind.Est. Chepstow.
Monmouthshire. NP16 6UD
Tel: +44 1291 620796



	NAME	DATE
DRAWN	MH	04/08/2023
APPV'D	AB	03/01/2024

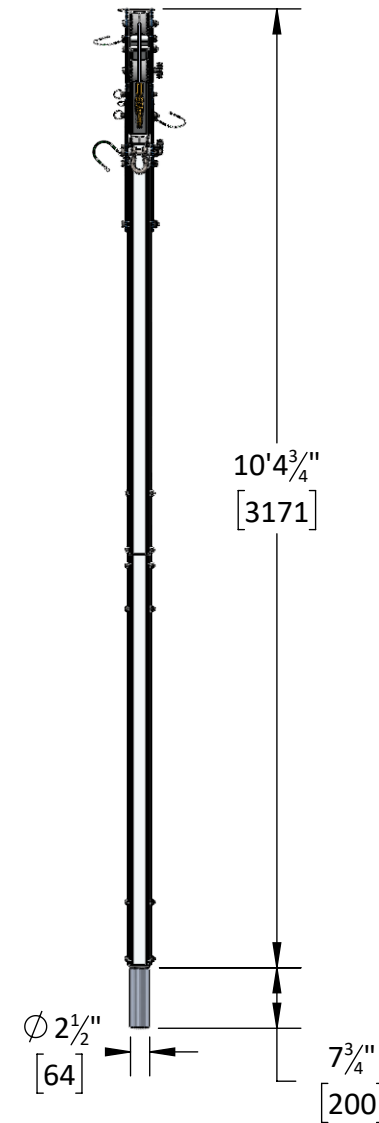
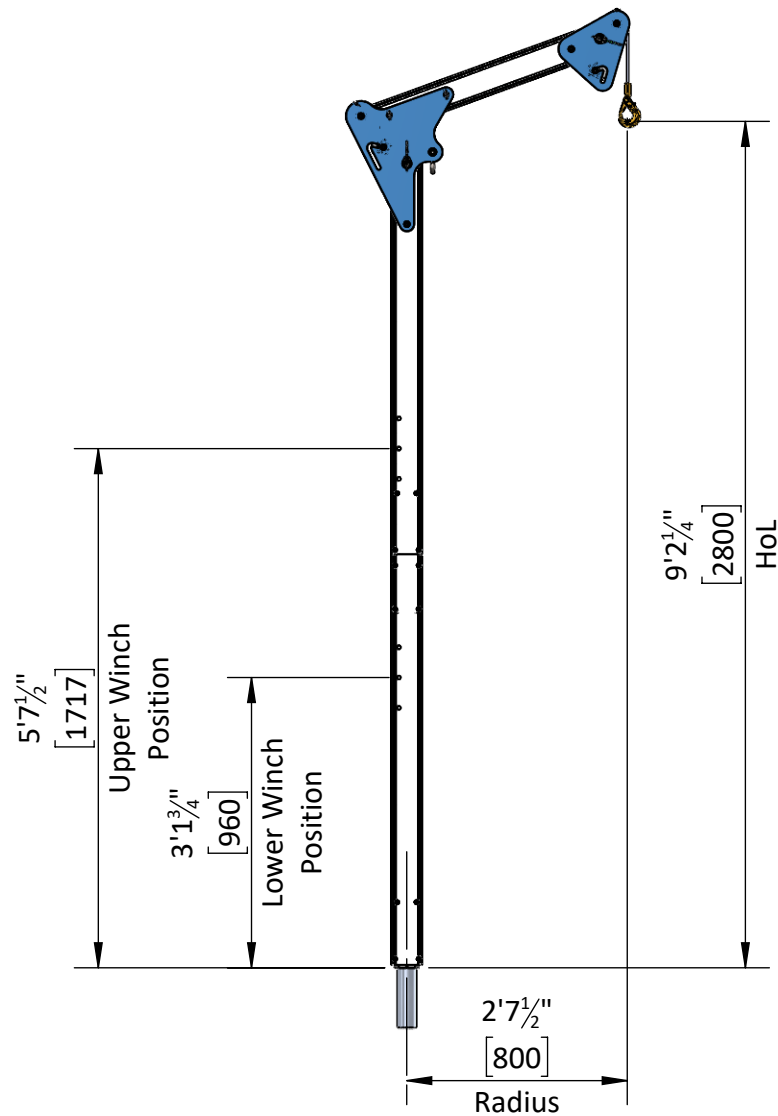
TITLE:

General Arrangement of REID
PortX Davit 31½" Radius HOL 7'
10½" WLL 660lb



ALL COPYRIGHT AND DESIGN RIGHT SUBSISTING IN THIS DOCUMENT IS THE PROPERTY OF REID LIFTING LIMITED AND MAY NOT BE REPRODUCED WITHOUT REID LIFTING'S CONSENT. THIS DOCUMENT AND THE INFORMATION CONTAINED WITHIN IT IS CONFIDENTIAL AND MAY NOT BE DISCLOSED TO ANY THIRD PARTY NOR USED FOR ANY UNAUTHORISED PURPOSE WITHOUT REID LIFTING'S CONSENT

REVISION	01	DO NOT SCALE DRAWING	1:20	SHEET 2 OF 2	A
----------	----	----------------------	------	--------------	---



Reid Lifting Inc. 7900 International Drive, Suite 300.
Bloomington. MN55425. USA
Tel: +1-888-721-6411

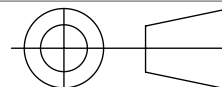
Reid Lifting Limited. Unit 1, Wyeview
Newhouse Farm Ind.Est. Chepstow. Monmouthshire.
NP16 6UD Tel: +44 1291 620796



www.us.reidlifting.com
info@reidlifting.com

	NAME	DATE
DRAWN	MH	04/08/2023
APPV'D	AB	03/01/2024

Approved



TITLE:

General Arrangement of REID PortX
Davit 31¹/₂" Radius HOL 9' 2¹/₄" WLL
660lb

ALL COPYRIGHT AND DESIGN RIGHT SUBSISTING IN THIS DOCUMENT IS THE PROPERTY OF REID LIFTING LIMITED AND MAY NOT BE REPRODUCED WITHOUT REID LIFTING'S CONSENT. THIS DOCUMENT AND THE INFORMATION CONTAINED WITHIN IT IS CONFIDENTIAL AND MAY NOT BE DISCLOSED TO ANY THIRD PARTY NOR USED FOR ANY UNAUTHORISED PURPOSE WITHOUT REID LIFTING'S CONSENT

REVISION **01** DO NOT SCALE DRAWING 1:25 SHEET 1 OF 2 A

General Specification

- Maximum rated capacity for goods lifting - 660lb
- Maximum rated capacity for personnel lifting - 330lb
- Beam deflection at maximum rated capacity of 660lb - 3"
- Assembled T-Davit weight - 57lb
- For further details and assembly information refer to Operations and Maintenance Manual for PortX Davit Product. (available at us.reidlifting.com)

Fall Protection Standards

- Complies with the requirements of OSHA 1910 sub part I (.140) & 1926 sub part M
- Ultimate load for OSHA calculations - 3140lb.(Safety factor must be applied)
- Meets the requirements for SPRAT & IRATA anchor points

Materials & Finishes

- Column and beam - 6082-T6 marine grade alloy. Anodized
- Plates - 6082-T6 Aluminium Alloy Powdered Coated
- Sheaves (where applicable) - Acetal Copolymer
- Fixings - Steel. Grade 12.9 Bright Zinc Plated

Lower Column
Weight 18lb

Beam
Weight 13lb

Upper Column
Weight 26lb

Reid Lifting Inc. 7900 International Drive, Suite 300.
Bloomington. MN55425. USA
Tel: +1-888-721-6411

www.us.reidlifting.com
info@reidlifting.com

Reid Lifting Limited. Unit 1, Wyeview
Newhouse Farm Ind.Est. Chepstow.
Monmouthshire. NP16 6UD
Tel: +44 1291 620796



	NAME	DATE
DRAWN	MH	04/08/2023
APPV'D	AB	03/01/2024



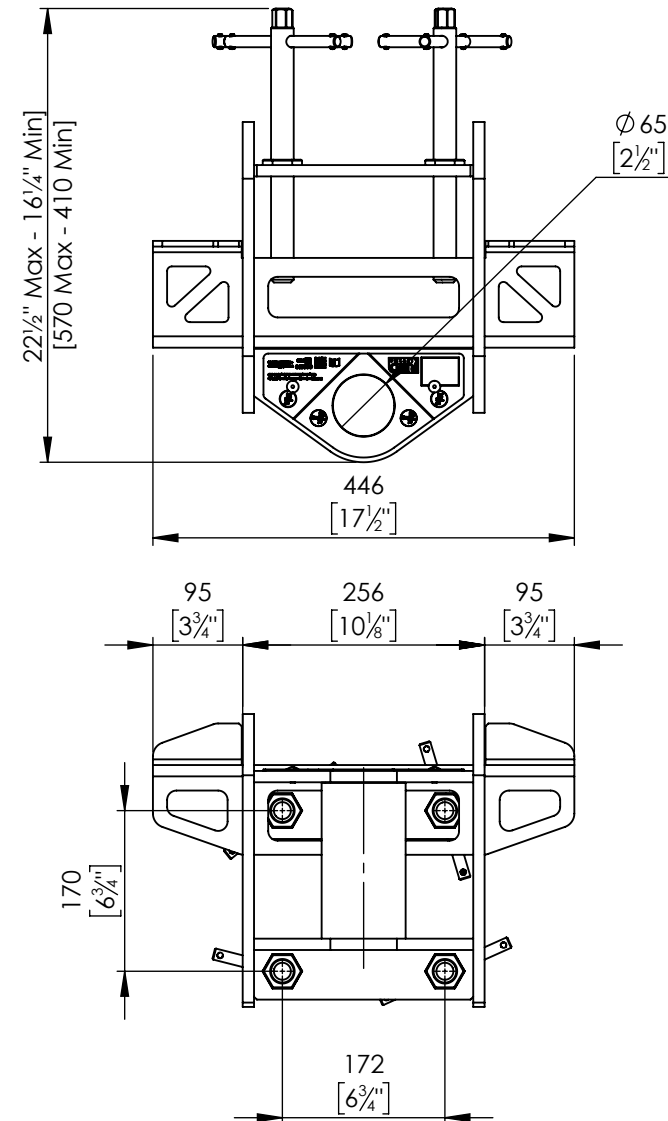
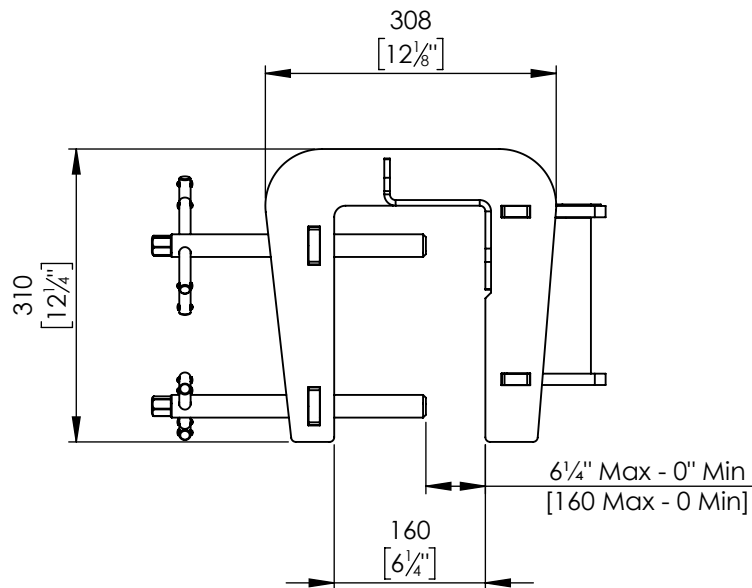
TITLE: General Arrangement of REID
PortX Davit 31½" Radius HOL 9'
2¼" WLL 660lb

ALL COPYRIGHT AND DESIGN RIGHT SUBSISTING IN THIS DOCUMENT IS THE PROPERTY OF REID LIFTING LIMITED AND MAY NOT BE REPRODUCED WITHOUT REID LIFTING'S CONSENT. THIS DOCUMENT AND THE INFORMATION CONTAINED WITHIN IT IS CONFIDENTIAL AND MAY NOT BE DISCLOSED TO ANY THIRD PARTY NOR USED FOR ANY UNAUTHORISED PURPOSE WITHOUT REID LIFTING'S CONSENT

REVISION **01** DO NOT SCALE DRAWING 1:20 SHEET 2 OF 2 A

PART No.

US-PTXTM0-160



Reid Lifting Inc. 7900 International Drive, Suite 300.
Bloomington. MN55425. USA
Tel: +1-888-721-6411

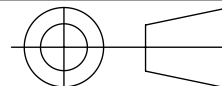
Reid Lifting Limited. Unit 1, Wyeview
Newhouse Farm Ind.Est. Chepstow. Monmouthshire.
NP16 6UD Tel: +44 1291 620796



www.us.reidlifting.com
info@reidlifting.com

	NAME	DATE
DRAWN	MH	09/05/2023
APPV'D	AB	12/09/2023

Approved



TITLE:

PortX Saddle Mount Socket

ALL COPYRIGHT AND DESIGN RIGHT SUBSISTING IN THIS DOCUMENT IS THE PROPERTY OF REID LIFTING LIMITED AND MAY NOT BE REPRODUCED WITHOUT REID LIFTING'S CONSENT. THIS DOCUMENT AND THE INFORMATION CONTAINED WITHIN IT IS CONFIDENTIAL AND MAY NOT BE DISCLOSED TO ANY THIRD PARTY NOR USED FOR ANY UNAUTHORISED PURPOSE WITHOUT REID LIFTING'S CONSENT

REVISION					
01	DO NOT SCALE DRAWING	1:8	SHEET 1 OF 2	A	

General Specification

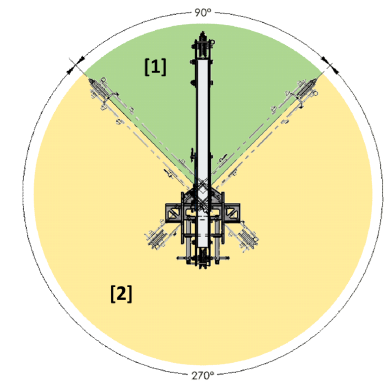
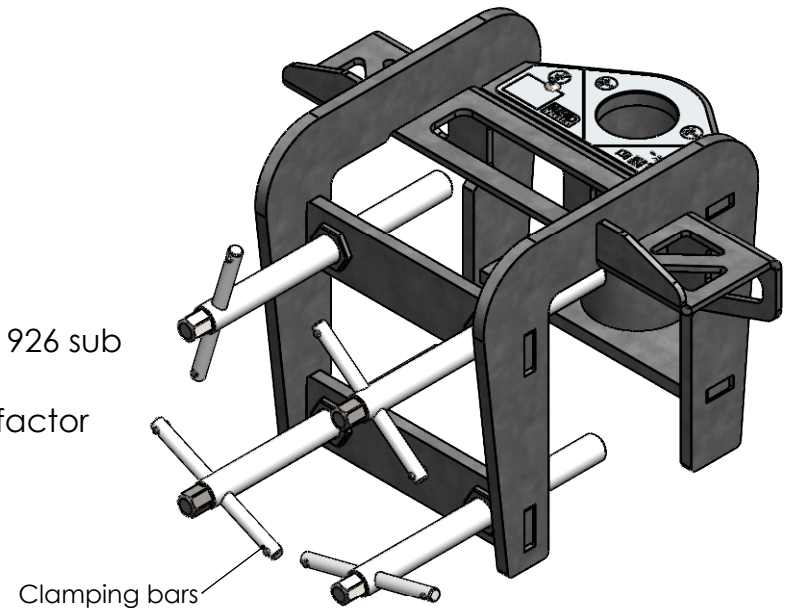
- Rated Capacity (Goods): 660lb [1 or 2]
- Rated Capacity (Personnel): 330lb [1 or 2]
- Maximum Rated Arrested Force <6kN [1 ONLY]
- Maximum Pivot Angle [1]: 90°
- Maximum Pivot Angle [2]: 270°
- Maximum Allowable Radius of Davit: 47¼"
- Socket weight: 51lb

Applicable Standards

- Complies with the requirements of OSHA 1910 sub part I (.140) & 1926 sub part M.
- Ultimate load for OSHA calculations - 16kNm (11801lb.ft). (Safety factor must be applied).

Materials & Finishes

- Main Body: S275JR Grade Steel. Galvanised.
- Fixing Studs: Bright Zinc Plated Steel.
- Mounting structures must be capable of withstanding design loads of 16kNm (11801lb.ft)
- Ensure all clamping bars are hand tightened before loading.
- This product must only be used with approved davits manufactured by REID Lifting.



Pivot Angles

Area	Goods lifting	Personnel Lifting	Fall Arrest
Green [1]	✓	✓	✓
Yellow [2]	✓	✓	✗

Reid Lifting Inc. 7900 International Drive, Suite 300.

Bloomington. MN55425. USA

Tel: +1-888-721-6411

www.us.reidlifting.com

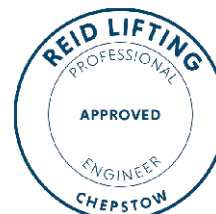
info@reidlifting.com

Reid Lifting Limited. Unit 1, Wyeview

Newhouse Farm Ind.Est. Chepstow.

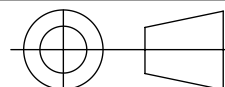
Monmouthshire. NP16 6UD

Tel: +44 1291 620796



	NAME	DATE
DRAWN	MH	09/05/2023
APPV'D	AB	12/09/2023

Approved



TITLE:

PortX Saddle Mount Socket

ALL COPYRIGHT AND DESIGN RIGHT SUBSISTING IN THIS DOCUMENT IS THE PROPERTY OF REID LIFTING LIMITED AND MAY NOT BE REPRODUCED WITHOUT REID LIFTING'S CONSENT. THIS DOCUMENT AND THE INFORMATION CONTAINED WITHIN IT IS CONFIDENTIAL AND MAY NOT BE DISCLOSED TO ANY THIRD PARTY NOR USED FOR ANY UNAUTHORISED PURPOSE WITHOUT REID LIFTING'S CONSENT

REVISION	01	DO NOT SCALE DRAWING	1:6	SHEET 2 OF 2	A
----------	----	----------------------	-----	--------------	---